

# BHASVIC

BRIGHTON HOVE AND SUSSEX SIXTH FORM COLLEGE

# 2019

PROSPECTUS





# Open Evening

Wednesday 14 November, 6.30 - 9.00pm

Thursday 15 November, 6.30 - 9.00pm

Apply to BHASVIC online at [www.bhasvic.ac.uk](http://www.bhasvic.ac.uk)  
For more details about applying, see page 141

'Between The Downs And Sea We Flourish'

The BHASVIC logo is based on the words taken from the city crest.

# Welcome to BHASVIC



The experience of being a BHASVIC student will be something that you will remember for the rest of your life. Studying here is a rewarding and enriching experience. You will be part of a culture of academic excellence and aspirational standards to secure the best outcomes for you. Our results are testament to this and are consistently some of the best in the country.

At BHASVIC you will be treated as an adult and teachers will work with you in creative and dynamic ways as a co-creator of your own learning. You will be taught more than just course content; we will ensure you develop the skills you need to be an independent, lifelong learner with the ability to think for yourself. On top of this, our first-class student services and guidance staff will ensure you are well supported at every step of the way.

Outside of lessons you will be part of a vibrant community with opportunities to engage in a wide range of activities with something to suit everyone. We are a stimulating place to be, at an exciting stage of your life! BHASVIC is a contemporary, creative, learning community and we look forward to you being a part of this when you start in September 2019.

A handwritten signature in black ink, appearing to read 'William Baldwin'.

William Baldwin  
**PRINCIPAL**



# Contents

SIX REASONS TO MAKE BHASVIC YOUR SIXTH FORM	4
BHASVIC – A CONTEMPORARY CREATIVE LEARNING COMMUNITY	6
WHAT IS SPECIAL ABOUT SIXTH FORM COLLEGES?	10
AN ALL-ROUND EDUCATION: SUBJECTS, SKILLS, VALUES, BREADTH	11
BHASVIC: RAISING ASPIRATIONS	12
YOUR STUDY PROGRAMME	14
VOCATIONAL AND PRACTICAL PROGRAMMES	18
DEDICATED SUPPORT FOR YOUR SIXTH FORM STUDY	19
PREPARING FOR LIFE AFTER BHASVIC	20
EQUALITY, DIVERSITY AND INCLUSION	22
RESOURCING YOUR LEARNING	24



<b>GETTING INVOLVED IN WIDER OPPORTUNITIES AT BHASVIC</b>	<b>26</b>
<b>ADDITIONAL LEARNING SUPPORT</b>	<b>30</b>
<b>ENGLISH AS SECOND OR OTHER LANGUAGE (ESOL)</b>	<b>30</b>
<b>THE STUDENT UNION</b>	<b>31</b>
<b>LIFE AFTER BHASVIC – WHERE NEXT?</b>	<b>34</b>
<b>COURSE INFORMATION PAGES</b>	<b>38</b>
<b>ENTRY REQUIREMENTS</b>	<b>136</b>
<b>SECOND YEAR PORTFOLIO COURSES</b>	<b>138</b>
<b>APPLYING TO BHASVIC</b>	<b>141</b>
<b>COURSE LIST</b>	<b>144</b>



## Six reasons to make BHASVIC your sixth form

### EXCELLENT RESULTS

BHASVIC is in the top 10% of state schools and colleges for both our exam results and for 'progress' outcomes which measure the value we have added to your learning. There are very few schools or colleges that can claim this status!

### SATISFACTION

Over 90% of students are satisfied with their experience at BHASVIC; 96% of staff would recommend BHASVIC as a good place to work; Ofsted graded BHASVIC as Outstanding in their most recent visit.

### FUTURE READY

88.5% of BHASVIC students who go on to a degree gain a 1st or 2:1 – well above national average for both state and independent schools.

### EXCELLENT SUPPORT

First class student services and academic support, along with dedicated tutorial pathways - including University (1,000 applications processed last year!) Oxbridge (we're the largest single provider to Cambridge University!), Medicine (27 offers last year!), Art Foundation (nearly 10% opt for this route!) and Employability and Enterprise pathways (with integral work experience!)

### CHOICE AND FLEXIBILITY

Great range of courses – specialise or keep your options open! Over 40 subjects allowing well over 20,000 combinations of courses.

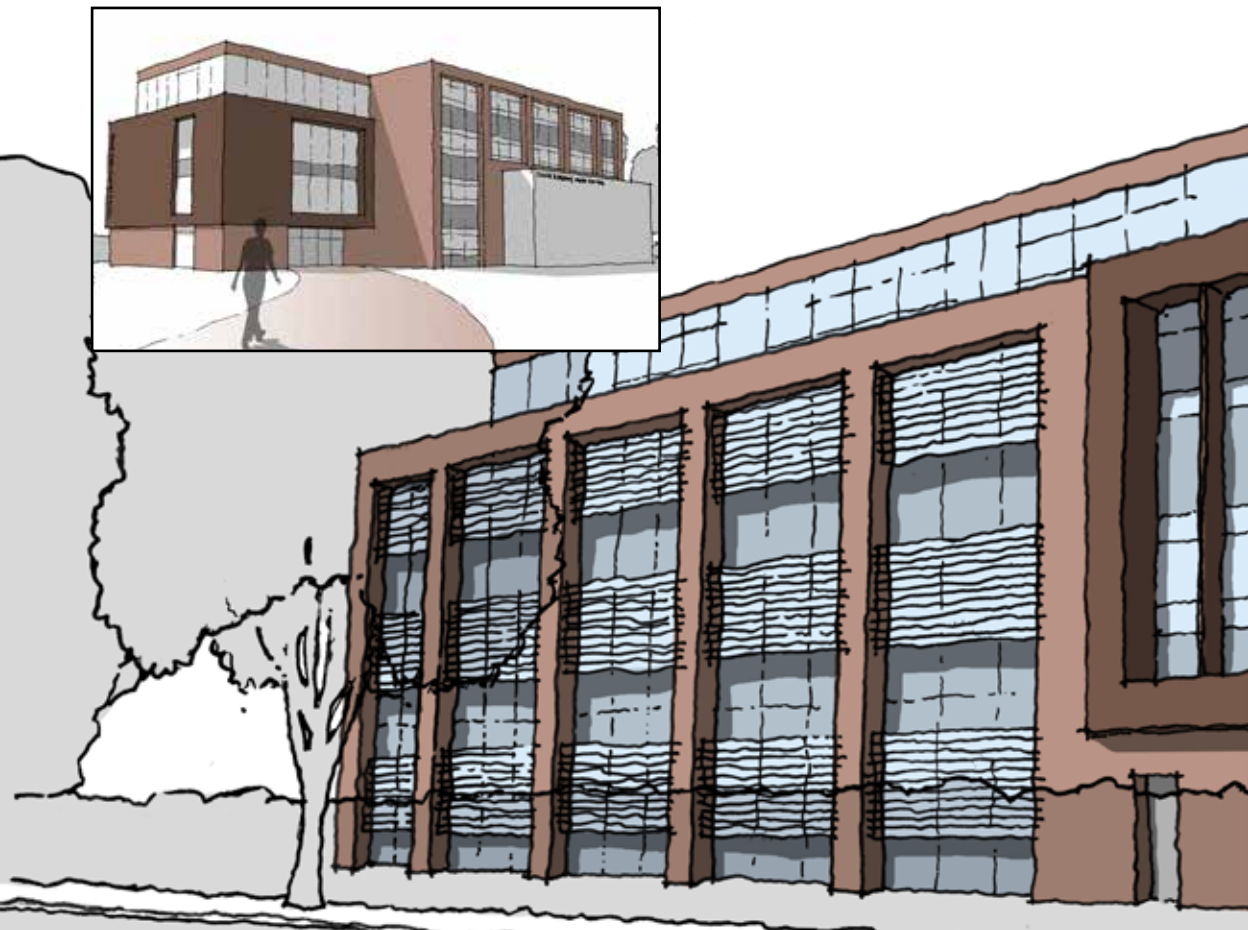
### CULTURE

A learning culture ensures students work hard, enjoy studying and make the most of social and enrichment opportunities.



“BETWEEN  
THE DOWNS  
AND SEA  
WE FLOURISH”





▲ Artist's impression of our new building set to open Spring 2020.

## CONTEMPORARY

Although our roots are as an old Grammar School there is a modern feel to BHASVIC. In Spring 2020 we plan to open our new building which will provide first class accommodation for Drama, Performing Arts, Music, Media, Film and Biology. This will create additional modern spaces around college to enhance your time at BHASVIC. We ensure a contemporary approach to your learning to ensure you receive the best experience possible both inside and outside the classroom.

## CREATIVE

Learning is a creative process, teaching is a creative job, our students are creative people and Brighton is a creative place! We encourage creative and collaborative approaches here at BHASVIC, allowing our teachers the freedom to innovate and experiment with the best ways of engaging with you to enrich and extend your learning. At BHASVIC you will be as well prepared as you can be to surpass your potential.





## LEARNING

Learning is at the heart of what we do. There is a learning culture at BHASVIC that students bring with them - here it is acceptable to be seen to be working hard, doing well and developing a love of your courses and of learning. This phase of study is fantastic – you will learn to a depth that will be both fascinating and challenging. At BHASVIC you will begin to feel like a true expert in your chosen courses.

## COMMUNITY

We are an inclusive and accepting college where every individual feels part of a community and has a sense of belonging. There are also plentiful opportunities to engage with the wider community outside BHASVIC – ranging from listening to local primary school children read, to providing Christmas entertainment at a local residential home, or raising money for the Student Union's chosen local charities.



**BHASVIC**

ALL VISITORS MUST REPORT TO RECEPTION



MAIN BUILDING	COPPER BUILDING	STUDENT SERVICES	COLLEGE HOUSE
RECEPTION	RECEPTION	RECEPTION	RECEPTION
ADMISSIONS	ADMISSIONS	ADMISSIONS	ADMISSIONS
ACADEMIC SERVICES	ACADEMIC SERVICES	ACADEMIC SERVICES	ACADEMIC SERVICES
LIBRARY	LIBRARY	LIBRARY	LIBRARY
SPORTS CENTRE	SPORTS CENTRE	SPORTS CENTRE	SPORTS CENTRE

**MAIN BUILDING**  
RECEPTION

**COPPER BUILDING**

**STUDENT SERVICES**

**COLLEGE HOUSE**

**SPORTS CENTRE**





# What is special about Sixth Form Colleges?

Sixth form colleges are the home of dedicated 16–18 education, facilitating the best post-16 academic provision and outcomes with a reputation for inspiring and nurturing a love of learning and high academic achievement.

Sixth form colleges are responsible for around a fifth of the A levels delivered in England each year and help their students to achieve better exam results than all other non-selective providers.

Sixth form colleges are specialists focusing their entire staffing and resources on delivering 16–19 education with teaching, learning and guidance specialised for this age group.

Sixth form colleges provide exceptional support and resources for preparing for adult life, including applications to University and careers advice.

Students educated at a Sixth form college achieve a higher A level point score per entry than school sixth forms. Students (including disadvantaged students) educated at a Sixth form college are more likely to progress to a UK University, are more likely to continue into their second year and are more likely to progress to the most selective institutions than students educated elsewhere in the state system.

Students attending Sixth form colleges who wish to progress to employment after completing their studies are more likely to do so than those at other state schools or colleges.

Data taken from Sixth Form College Association: 2017 Key facts and figures publication.





# An all-round education: Subjects, Skills, Values, Breadth

Our mission at BHASVIC is to ensure that you receive an all-round education that prepares you to be an independent lifelong learner. We want you to make the most of the opportunities available here that will enable you to realise your potential.

## SUBJECTS

A levels and/or BTECs (along with English or Maths GCSE for those who need it) will form the foundation of your timetable at BHASVIC. Learning here will go deeper than the course content you are required to know – doing well at this level requires you to be able to manipulate knowledge which means you have to understand it. We ensure you will develop the skills to be able to do this.

## SKILLS

Learning how to learn requires that you have the study skills and abilities to know how to manipulate knowledge, solve problems and make connections. On top of that it involves knowing how to manage your time and work independently. We will help you reflect on your studies and your progress and identify skills you need to develop, not just to ensure you do well in your courses but that you are well prepared for your future as a lifelong, independent learner. In part we do this using our 6 R's initiative – that students are Reflective, Resilient, Resourceful, Respectful, Responsible, Risk-takers. Your lessons will also involve learning independently, learning with others and receiving individualised academic support from your teachers.

## VALUES

We want to ensure that you leave here informed and aware of your role as a citizen at local and national level as well as in the wider world. At BHASVIC you will belong to a community where you can develop your own values of democracy and freedom of speech through discussion and debate. You will have the opportunity to join college societies outside of your lessons whilst within tutor groups you will follow carefully tailored sessions to develop your thinking and understanding of issues.

## BREADTH

We want to ensure that your learning stretches over a number of domains, whatever the focus of your course combinations. There is an incredible array of smaller, shorter portfolio courses from which to choose in your second year, including the Extended Project. These short courses are designed to help you specialise further and build your CV in a course or career focus of your choice. Our enrichment opportunities add breadth to your time here and you can read more about 'Getting involved' on page 26.



# Raising Aspirations

At BHASVIC we want to show you that anything is possible! This year 57 students received an offer to study at Oxford or Cambridge University. These students were drawn from 24 secondary schools and 27 of the students are on our Widening Participation programme which aims to raise aspirations and provide support for University applications from students who are from a non-traditional Higher Education background.



The college works closely with universities to encourage students from non-traditional backgrounds to progress into Higher Education. This includes organising University open days, course-specific taster days, personal statement and interview support and giving information, advice and guidance on possible extra funding or support available. Over half our first year intake qualified for some sort of Widening Participation scheme last year and we

have an outstanding reputation for our work in this field, which also involves sending regular newsletters home to ensure there is support for parents and carers too.

Since 2015 BHASVIC has received 133 offers of places to Oxford and Cambridge. We want to provide opportunities for genuine social mobility to ensure we really are changing lives through learning.

# Your Study Programme

A study programme is all the formal activities that you take at the college consisting of:

- A levels, BTECs and GCSE qualifications
- Tutorial Programme: Lessons and one-off events covering careers preparation and Higher Education applications, study skills, citizenship and personal wellbeing
- Portfolio courses: Additional one year courses, normally taken in the second year, that extend your practical or academic studies in areas where you are interested (for example, the Extended Project Qualification)
- Subject Extensions: Support sessions run by teachers to help you with specific areas in the courses you study
- Enrichment: Extra activities such as sport, performing arts, Duke of Edinburgh, community and charity work, clubs, societies, visual arts, mathletes... these are not compulsory but we actively encourage students to take part

The majority of students will take three A levels or equivalent (such as a combination of BTECs and A levels) at BHASVIC. This forms the core of our standard study programme, as it does nationally at this level, and is the normal requirement for entry to Higher Education. It is possible to take four A levels here, most commonly Double Maths alongside two other subjects. We will discuss whether four A levels are appropriate with applicants individually at interview. Some students may qualify to come to BHASVIC yet will also need to re-sit English or Maths GCSE which can be done alongside the main elements of a study programme. Examples of study programmes can be seen on the opposite page.

BHASVIC works closely with our partner Further Education colleges in the Brighton & Hove Colleges' Accord. Our partnership works to promote the joint planning of recruitment, curriculum and services to meet the needs of the city's young people. To apply to BHASVIC use the online application form: [www.bhasvic.ac.uk](http://www.bhasvic.ac.uk)



Examples of Study Programmes

	SUBJECT 1	SUBJECT 2	SUBJECT 3	ADDITIONAL
YEAR 1	French A level	Drama A level	Media A level	Tutorial; Performing Arts Enrichment
YEAR 2	French A level	Drama A level	Media A level	Tutorial; Performing Arts Enrichment

	SUBJECT 1	SUBJECT 2	SUBJECT 3	SUBJECT 4	ADDITIONAL
YEAR 1	Double Mathematics A level		Biology A level	Chemistry A level	Tutorial, Chemistry Olympiad
YEAR 2	Double Mathematics A level		Biology A level	Chemistry A level	Medicine Tutorial Pathway, Extended Project

	SUBJECT 1	SUBJECT 2	SUBJECT 3	SUBJECT 4	ADDITIONAL
YEAR 1	Sport BTEC Diploma		Photography A level	GCSE Maths	Football, Tutorial
YEAR 2	Sport BTEC Diploma		Photography A level		Football, Tutorial, Community Sports Leadership

Each course will start with an induction period to help you to recognise what is being asked of you, and to move you up to a new level of work and understanding. Our students tell us they like the informal but purposeful atmosphere in the college, as well as having more independence than at school. Teachers treat you as a young adult who takes responsibility for themselves and their work, but who may require support and guidance to achieve this.







**BHASVIC**

Candidate Number:  
Date of Birth:  
VET Number:

17th August 2017

Examination Results: June 2017

See candidate for details of the state examination and for further information.

Subject	Grade	Notes
Mathematics	A	
Mathematics A	A	
Mathematics B	B	

Provide the student with the following information and may be required to complete the following details:

Signature: \_\_\_\_\_

Signature: \_\_\_\_\_

Signature: \_\_\_\_\_

Signature: \_\_\_\_\_

# Vocational and Practical Programmes

We offer a range of vocational and practical courses which provide a skills-based approach to learning through practical assignments linked to real life experiences and working life. These qualifications are highly valued by employers and Higher Education institutions alike. Outcomes are graded as Distinction\*, Distinction, Merit and Pass and have an equivalence to A levels for those seeking entry to University. An increasing number of students nationally are applying to University with a combination of A level and BTEC qualifications.

BTEC: COURSE	FIRST YEAR	SECOND YEAR
Single Course	Certificate Equivalent to: <b>1 AS level Max</b>	Subsidiary Diploma or Extended Certificate Equivalent to: <b>1 A level Max</b>
	<b>UCAS Points: 28</b>	<b>UCAS Points: 56</b>
Double Course	Subsidiary Diploma or Extended Certificate Equivalent to: <b>1 A level Max</b>	Diploma Equivalent to: <b>2 A levels</b>
	<b>UCAS Points: 56</b>	<b>UCAS Points: 112</b>
Triple Course	Subsidiary Diploma Equivalent to: <b>1 A level Max</b>	Extended Diploma Equivalent to: <b>3 A levels</b>
	<b>UCAS Points: 56</b>	<b>UCAS Points: 168</b>



# Dedicated support for your sixth form study

## STUDENT SERVICES

The Student Services team at BHASVIC is here to support all our students and help them achieve their goals during their time at college. We provide information, advice and guidance services in Financial Support; Travel; Welfare; Careers; Work Experience and Widening Participation.

## KEEPING YOU INFORMED

New students receive an online log-in and are able to keep track of their progress in terms of attendance, target grade and support plans through their personalised online account. Parents can also track progress online and through termly Subject Reviews. These give students a regular opportunity for self-reflection on their performance across all courses, and enables students and parents to see feedback from staff and an overview of progress. There are three Parents' Evenings in the first year which offer parents the chance to meet with the Personal Tutor and course teachers.

## TUTORIAL

You will be assigned a Personal Tutor at the start of your studies and they will act as a guide and mentor, keeping an eye on your progress, offering you support and help, encouraging you to take responsibility for your learning and your future. Tutor group sessions take place once a week and are located in our

Student Services building which also hosts a range of specialist support. BHASVIC's tutorial programme is carefully designed to support you on your educational journey, from settling into your new environment, all the way through to life after college. Tutor sessions are used for one-to-one discussions, as well as whole group activities, and are followed up with online independent learning to support your wider development.

## PATHWAYS

In your second year at BHASVIC you will select a specialist tutorial pathway to support your study and lead you towards the career or course that you want to follow after BHASVIC. The Pathways are:

- Oxbridge or Medical and Veterinary Careers
- Employability and Enterprise (including apprenticeships)
- University (UCAS) and Higher Education (H.E)
- Visual Arts applications

You will construct a study programme which reflects and supports your developing career aspirations, making up your timetable to include a portfolio course drawn from a range of options or significant work experience with an employer.

# Preparing for life after BHASVIC

## UNIVERSITY APPLICATIONS

The support we offer students applying to University runs from the first thoughts a student might have about studying in Higher Education right through to advice about how to budget your student loan and deal with landlords! The tutorial programme is structured to help you begin making decisions and understanding your options from early in the first year of your study at college. There is detailed support for you in researching options, preparing your application and writing a personal statement. Your Personal Tutor will check your progress in applying every step of the way and will guide you to making informed and successful choices.

Parents and carers are also supported via specialist links on our website and through Higher Education Information Evenings in the Spring term of the first year.

## SPECIALIST TUTORIAL PATHWAYS

These allow tutor groups with similar progression aims to focus on developing the skills to conquer the application process, utilising the expert guidance of the tutors involved. Students can opt for Oxbridge, Medical or Veterinary Careers, Visual Arts, Study Abroad; and for those not wishing to pursue Higher Education, there is an Employability and Enterprise pathway focusing on preparing students for apprenticeships and the workplace, which includes a work experience placement.

## APPRENTICESHIPS, EMPLOYMENT, WORK EXPERIENCE AND CAREERS

Students who are interested in moving onto an apprenticeship or gaining direct employment when they leave college will receive excellent support. We have strong links with local training providers who work with us to help students achieve a placement. We work with local employers to give students advice on job applications, CVs and interviews, and we arrange visits to their workplaces. You can undertake a work experience placement throughout your time at BHASVIC; whether it is over the college holidays, to fit in with your timetable or during the last week of the summer term. Whatever you choose, we can help you to find a placement and once one has been found, we will work with you to ensure that you get the best from the experience.

Our careers team are located in Student Services and provide access to up-to-date information about local full-time and part-time job vacancies; local and national colleges and universities; specialist training; careers, gap years, voluntary work and working or studying abroad. Two dedicated Careers Advisers provide free information, advice and guidance on your transition from college to Higher Education or work; planning your next steps and exploring career ideas; help with CVs and filling in forms; interview techniques and money matters.

## WELFARE

The Welfare team at BHASVIC offer advice on financial support available to our students, including 16-19 bursaries. We provide extensive information on travel to BHASVIC and the various discount schemes that are available for bus and train. You can access information and support on a wide range of issues such as sexual health, anxiety and stress, alcohol, substance misuse and relationships. The college

runs various events and activities throughout the academic year linked to National Awareness Days and provides a wide range of information on a variety of welfare topics within the Student Services Centre. The college employs qualified Dialogue Counsellors. You can discuss your feelings, thoughts and any worries you may have concerning such things as college work, relationships and home life, in a confidential and informal setting.









# Equality Diversity Inclusion



We celebrate that we are a college with a diverse group of students and staff, where acceptance and respect are part of our core values. Our community welcomes everyone as individuals who all contribute to a positive environment.

BHASVIC provides a safe place for you to re-invent yourself. At BHASVIC you will find a group that you belong to, where you feel you fit-in and with whom you identify. Relationships between both staff and students are very good.

You will be respected and treated as an individual in an adult atmosphere - we will treat you fairly and without prejudice in every aspect of college life.



# Resourcing your learning

The college has a range of facilities to help you to work . Our well-equipped library provides a superb silent environment for independent study and research, with a wide range of reference works, text books, journals, newspapers and computer access to on-line journals and media. Computer printing and photocopying facilities are available and the Librarians will help you to make the best of the resources. Library staff provide advice and support with research and study skills.

## IT FACILITIES

IT facilities are spread throughout the college and BHASVIC has an impressive ratio of one device for every two students. BHASVIC wi-fi supports access via your own personal devices if you have them and choose to bring them.

## SPECIALIST CURRICULUM FACILITIES

Many departments have the specialist facilities you would expect to find at a large college. The Science Departments have well equipped laboratories dedicated to their specific science, and excellent technical support for individual practical work. Modern Languages' students use the Language Centre's digital facilities to improve their speaking and listening skills. There are three large

Art studios, two large Photographic studios and a dark room. The current theatre has a 100 seat capacity and there are five music rehearsal rooms alongside the main Music teaching room. Media and Film have a fully equipped editing suite, with high-spec macs and software. The Sports Hall and Dance studio are also well-equipped specialist facilities within the college. The Copper Building is home to excellent facilities where the Copper Cafe, Additional Learning Support and student social space can be found.

We are due to have a new building, planned to open in 2020, with enhanced Drama, Music, Media and Film provision along with additional specialist Science labs and student social / study space.



# Getting involved in wider opportunities at BHASVIC

BHASVIC offers numerous opportunities to get involved beyond your courses. At the BHASVIC Enrichment Fair in September, you can choose from and sign up to an exciting array of options:

- Clubs and short courses which may introduce you to a new skill or be purely recreational, for example, Creative Writing, Journalism or BHASVIC TV
- Societies such as the Feminist Society (FemSoc), Debating Society, LGBTU, charities, pressure groups, faith or party political based groups
- Sport, Music, Drama, Creative Arts
- Working with young children, listening to primary school children read
- Specialist career or study areas such as Preparation for Medicine, Visual Arts, Oxbridge, CREST Awards and International Study
- Day and residential trips in the UK and abroad
- Regular visits from high profile speakers as well as local and national MPs
- Work experience, including work placements abroad

## SPORT

If you take your sport seriously you can opt to take part in a wide range of team sports including Football, Netball, Rugby and Basketball. We are proud of the success of our teams in competitions, but equally, BHASVIC helps to support individuals who represent the college in a wide variety of sports – from athletics to gymnastics. If your interest is more for fun or keep-fit purposes, we offer plenty of opportunity to participate and offer a different sporting activity every lunchtime, including yoga, table-tennis, 5-a-side football and dance sessions.

Last year our women's football team reached the national final of the FA Colleges Cup for an unprecedented second year in a row, making it down to the last two from over three hundred teams who entered!



## STUDENT PROFILE

**Emily****PREVIOUS SCHOOL:**

Seaford Head School

**STUDYING A LEVELS IN:**

Biology / Sport and Exercise  
Science Diploma

During my time at BHASVIC my confidence has grown massively, especially being part of the women's football team. Playing in two National Cup finals has been an experience I will never forget! I have had continuous support from all of my teachers and members of staff which really makes

you feel comfortable at the college and it has also helped me balance my studies. In the near future I am looking to complete my coaching badges enabling me to pursue my coaching ambition whilst also attending University to study sport and exercise science.

## **PERFORMING ARTS**

Every year, BHASVIC stages professional quality theatrical, dance and musical productions. The Music department's Christmas concert is always a showcase of eclectic performances from talented students. Last year students involved in Drama enrichment combined their talents to stage a production of 'Voices' a celebration of work to mark 50 years since the de-criminalisation of homosexuality. Audiences in this sell-out production were wowed by the considerable talent of the students involved. You don't have to take Dance, Drama or Music to be involved in productions – anyone can take part!

## **CREATIVE ARTS AT BHASVIC**

BHASVIC's Creative Arts Festival takes place every year in the Summer Term after the exams have finished. Celebrating the success of students who have been involved in Creative Arts courses, the Festival includes a Visual Arts Exhibition (a gallery of student work in Art, Photography, Textiles and Graphics), BHASVICTORs (a celebration of Media and Film), InMotion (a stimulating evening of contemporary dance), The Beards (celebrating the best pieces of written work by students in the English Department) and Café Culture (an evening of open air music).

## **DUKE OF EDINBURGH'S AWARD SCHEME**

Challenge yourself! At BHASVIC, students can work towards the Duke of Edinburgh's Gold Award. With its five sections (Volunteering, Physical, Skills, Expedition and Residential) the Award is a wonderful opportunity to develop yourself outside the classroom. It is easy to see why it is so highly valued by universities and employers. You will meet for one session a week with a group of students and a member of staff to plan your award activities and review your progress. You will practise for the Expedition through a training day in Sussex to hone your map and compass skills before completing the Practice and Qualifying Expeditions later in the year in Snowdonia and the Lake District. You will need suitable footwear and clothing for hiking, but tents and other expedition equipment can be borrowed free of charge.

## **WORLD CHALLENGE EXPEDITIONS**

For those seeking adventure further afield, World Challenge expeditions combine both the physical challenge of trekking with community and conservation work with some much needed time for rest, relaxation and sightseeing. These expeditions can last up to one month and allow you the opportunity to lead and play a part in the decision-making of what you do and how you budget for it. They often involve significant time away from the mod-cons of phone reception, wi-fi, electricity and running water, allowing you to experience life from a different perspective.



# Additional Learning Support

Support for students with Special Educational Needs and Disability (SEND) is referred to as 'Additional Learning Support' at BHASVIC. This support is available for any student who requires some help and guidance with their learning, not just those with a diagnosed or assessed need. We aim to work with you to make sure you have every opportunity to achieve your potential. We provide a range of support that is tailored to suit the needs of the individual student. Students can bring work related

to their studies including coursework, and address their difficulties with the help of Additional Learning Support Teachers. Support can include help with essay writing, effective note-taking and organisational skills. We also provide support for Maths and English GCSEs and preparation and practice for exams. In-class support is sometimes provided to students who have significant needs. Assistive technology can be provided to help students access learning, where assessments demonstrate need.

## EXAM ARRANGEMENTS

If you have had Access Arrangements and/or Reasonable Adjustments for Exams for your GCSEs we will assess you at the start of your time here to see if you will continue to need these arrangements during your studies at BHASVIC. Our aim is to ensure that students develop the skills and strategies they need to manage their difficulties in preparation for a productive and fulfilling life.

If you have a specific learning difficulty (e.g. dyslexia) a sensory impairment, mobility problems or anything else that affects your learning, please let us know via the Admissions Department: **01273 859810** or **[admissions@bhasvic.ac.uk](mailto:admissions@bhasvic.ac.uk)**

## English as Second or Other Language (ESOL)

We provide courses from beginners to pre-GCSE. All courses are full time and include ESOL, Maths and ICT. Students also have the opportunity to take Maths GCSE and a Level 2 ITC qualification. ESOL classes run from September to June. They can be joined during the year if there are spaces available. Our dedicated ESOL team also provide a range of enrichment opportunities within the ESOL programme of study, which includes art, playing sports and games and other activities to raise skills and self-esteem. If you would like to start in September applications need to be returned by the first Friday in December. Once we receive your application we will invite you in for a short test and interview; this will help us to make sure we put you on the right course.



# The Student Union

## WHAT IS IT?

The Student Union comprises of 16 students (the Union Executive) who all have particular jobs to do, such as Secretary, President, Welfare Officer, Communications Officer, Charity Officer and Entertainment Officer. We are responsible for ensuring that your voice is heard. If you wish to contact us about anything at all you will find us in the Student Union office in the Refectory, or find us on any of our many social medias such as Facebook and Twitter.

## SO WHAT DOES THE STUDENT UNION DO?

Most obvious to the majority of students are the social events we organise. Freshers' Week comes first in September followed by Battle of the Bands in February as well as other events such as the Christmas Talent show, Christmas Quiz, Democracy Week and Leavers' Event, to name just a few.

We also speak to students on important issues - and act on them as well via the Student Council. For example, we

have asked for changes to be made to the Teacher Cover policy, fed into discussions on how to improve the Learner Voice process, and represented students on a range of committees from the BHASVIC Inclusivity Group (BIG), Safeguarding Team and at Governors' meetings. We also raise a lot of money for your chosen charities throughout the year.

## IS THE UNION THE ONLY VOICE FOR STUDENTS?

No. There is also a Cross-College Council, with a representative from each Tutor Group to take concerns direct from you to the Union Executive in a half-termly meeting. Each curriculum class also elects a representative who will meet with other students from their course and a teacher to talk about how things are going and what improvements can be made.

## HOW DO I GET ON TO THE UNION?

Stand in the election in March, run a poster campaign, speak at meetings, and get yourself voted on!







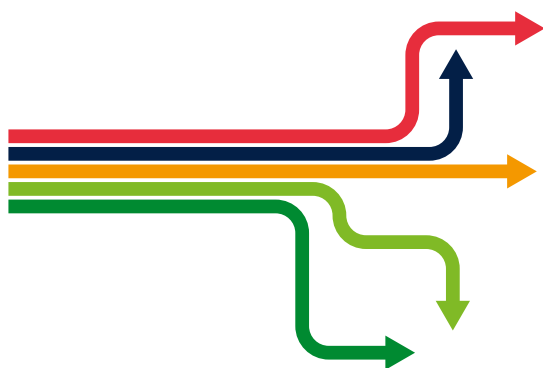


# BHASVIC

Student Union

# Life After

# BHASVIC



## Where Next?

From your initial interview to regular meetings with your Personal Tutor, staff will carefully consider and plan how to facilitate your progression. We will encourage you to be aspirational and challenge yourself to do the very best you can in your courses and in your future career and life goals.

All students discuss their options with their Personal Tutor as part of the weekly tutor programme and students are guided and encouraged in their use of resources, both in the careers area in Student Services and on the best websites to find out about Higher and Further Education courses, apprenticeships, employment, careers of interest and gap year projects.

Students leaving BHASVIC go on to University, into employment or take a gap year. At BHASVIC, we consider our students' next steps to be of primary importance. In many ways, our students'

destinations after completing their studies with us, and their achievements later on in their lives, are as important to us as the results they achieve while they are here. This is why we invest every effort in supporting our students to gain entry into their chosen destinations and to continue to achieve once there.

The impact of this investment in our students' futures comes from the Higher Education Statistics Agency ([www.HESA.ac.uk](http://www.HESA.ac.uk)). Here, statistics show how well BHASVIC students performed in comparison with other national providers of sixth-form education.

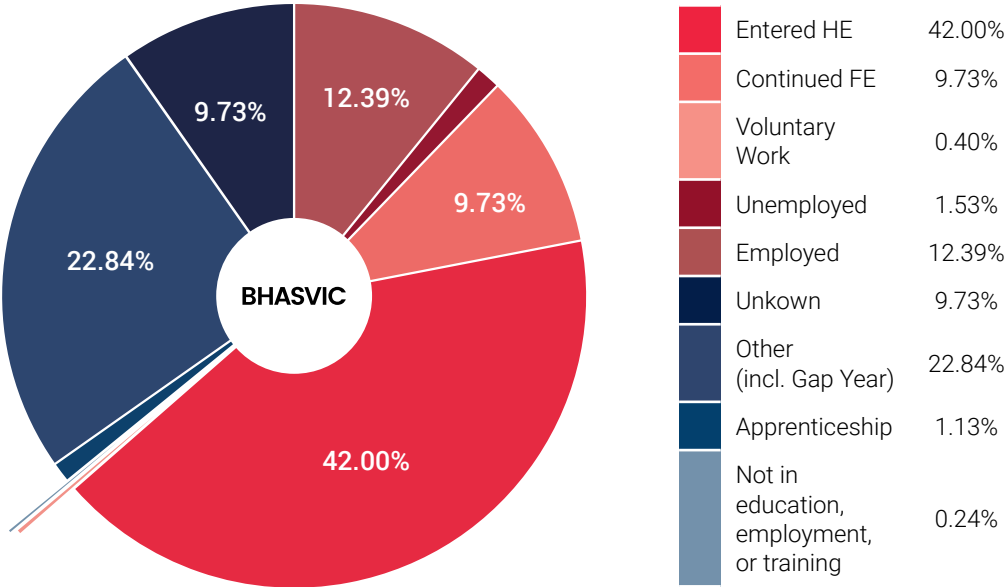


# BHASVIC Students Degree Outcomes

DEGREE CLASSIFICATION	1ST CLASS	1ST OR 2:1
BHASVIC	38%	88%
INDEPENDENT PROVIDERS	27%	85%
SIXTH FORM COLLEGES	26%	79%
ALL STATE PROVIDERS	26%	77%

The figures show that more than four in every five BHASVIC students who completed a degree achieved a 1st or a 2:1. This percentage is significantly higher than all other sectors, including the independent sector. We believe that BHASVIC offers something unique; preparation in giving our students the independence to achieve at the highest level. Over 51% of our students go on to study at a high tariff University compared to a national figure of 29%. According to Cambridge University admissions data, BHASVIC is the largest provider of students to Cambridge University with 42 offers from 92 applications. Our conversion rate of 45% (applications to offers) is the highest of any non-selective state education provider! In total, 57 students received offers from Oxford and Cambridge, nearly half of whom are from families who have not traditionally gone to University.

## Destinations of BHASVIC A2 students who completed in 2017











# ART – FINE ART: A LEVEL

## MINIMUM ENTRY REQUIREMENTS

C/4 in Art GCSE. To see overall entry requirements to study at BHASVIC refer to page 136. A charge for materials applies to Art, bursaries and payment plans are available.

## WHAT WILL I STUDY

Our grade one outstanding course is broad and experimental in approach and includes drawing and painting, printmaking, mixed media and 3D work. We help you to develop a personal pathway with the skills and knowledge to produce creative individual and high quality artwork. We encourage you to be inventive, independent and involved.


## WHERE NEXT

Creative careers are diverse and students may not have heard of some of the roles that they can progress to after taking a Fine Art A level. Careers can range from a Cartoonist to an Art Valuer; from a Museum Creator to an Advertising Art Director. There are routes into many of these professions via University, Art Foundation and through Apprenticeships. Taking a creative course can open a range of opportunities to you and the expansion of apprenticeships means that students now have a wider choice of career options available to them. Useful websites to research careers and wider progression options could include the Creative Skillset, Creative Choices, All About Careers and The Apprenticeship Guide.

## IS THIS COURSE RIGHT FOR ME

Are you ambitious, motivated and creative? This course is a practical making/creating course which uses a vast range of specialist materials and art techniques, it is 60% practical portfolio and 40% practical exam. Our Practical Portfolio component is supported by a 3000 word contextual/ personal study essay and exam unit. The first year builds knowledge, understanding and skills through working on themes: the second year becomes more focused on you and the development of your personal ideas. A charge of £180 applies to contribute towards the cost of materials used during the two years of this course, bursaries and payment plans are available. You are given a generous allocation of colour printer credits per component of work and once you have used them up you top them up at your own expense.





**Visual Arts at BHASVIC  
allows students to explore  
new techniques & develop  
their individual artistic style.**

Rowan, Textiles & Graphics



# BIOLOGY: A LEVEL

## MINIMUM ENTRY REQUIREMENTS

B/5 in Maths GCSE, C/4 in English Language GCSE and 2 B/6s in 2 Sciences at GCSE including Biology or Additional Science (not Applied Science). To see overall entry requirements to study at BHASVIC refer to page 136.

## WHAT WILL I STUDY

A full range of fascinating topics, from the details of cell structure to entire eco-systems. You will study animals, plants and micro-organisms; the workings of their cells, evolution and adaptations, and the application of bio-technology to benefit humans. You will discuss the challenges of maintaining bio-diversity and sustainable environmental management. It's a really good range of topics so that everyone will find areas that interest them! It is also very contextualised to relate it to how the world works around you. Students keep a lab book to evidence their skills.

## IS THIS COURSE RIGHT FOR ME

You will enjoy this course if you: have a real enthusiasm for Biology and want to understand the complexity of living organisms and systems; want to understand how society makes decisions about biological issues; enjoy using your practical, mathematical and problem-solving skills and want to develop your skills further. Students will succeed most if they are self-motivated independent learners. Flipped learning is used for all topics, lessons are interactive and build upon independent study. Good with Chemistry, Maths, Psychology, Sport, Environmental Science.

## WHERE NEXT

The range of courses and work opportunities involving Biology are vast and includes: veterinary science, medicine, dentistry, physiotherapy, sport science, psychology, pharmacy, bio-technology, zoology, marine biology, plant and animal science, cosmetics, healthcare, agriculture, environmental science and many more. There are also a variety of roles within sustainable resource management as the 'Green' economy continues to grow. The scientific skills developed through Biology are widely valued and transferrable to the world of work. Biology helps you to build up research, problem solving, organisation and analytical skills. Useful websites to research careers and wider progression options could include the Royal Society of Biology, All About Careers and The Apprenticeship Guide.

## STUDENT PROFILE

# Tian

### PREVIOUS SCHOOL:

Varndean School

### STUDYING A LEVELS IN:

Maths, Biology and  
Psychology

I have thoroughly enjoyed studying Biology A level at BHASVIC. I found topics like Microbiology and Respiration to be the most interesting. The teachers have been super supportive throughout the entire year.

I also study Maths and Psychology at college and I am hoping to go to Exeter University to do a degree in Management with Marketing.



# BUSINESS: A LEVEL

## MINIMUM ENTRY REQUIREMENTS

C/4 in Maths GCSE and English Language GCSE. To see overall entry requirements to study at BHASVIC refer to page 136.

## WHAT WILL I STUDY

Business A level allows you to develop a critical understanding of business by investigating and analysing real-life business successes and business failures. You can then use this invaluable knowledge to succeed in any career! Before and throughout this course students are encouraged to read up on businesses (brands, sports clubs, festivals, cars etc) that they are interested in. We'd also expect students to take an interest in current affairs so that they can begin to understand the causes and effects of consumer, business and Government behaviour. It includes elements of Marketing, Accountancy, Strategic Planning, managing employees and Economics. You will develop your skills of independence and Level 3 evaluative exam skills.

## IS THIS COURSE RIGHT FOR ME

You need a genuine interest in businesses and the world outside of education. You need to be able to work individually or in groups to research into or discuss a particular business situation, questioning at every opportunity. Business is a subject that requires students to learn theories, and identify and assess them in business case studies. There is therefore a substantial element of reading and writing. Analysing data and communicating using written, numerical, visual and verbal methods are all part of the course. Students are expected to study given basic business theory before every week so that we can use this self-taught knowledge to explore real business case studies and effectively answer exam questions. Business complements all subjects because every student will be an employee at some point, whether as an engineer, a dancer etc, so will benefit from critiquing businesses.



## WHERE NEXT

This subject can take you in many different directions such as Marketing, Finance, HR, Logistics and Retail. It provides an insight into functions that are relevant to all sectors of the economy and employment routes. Whatever your skillset, there is a role within a business to suit you, from customer facing roles to financial analysis. The skills you gain on the course will allow you to make a valuable contribution to a business in the future. A Degree Apprenticeship in Chartered Management also exists for students to progress on to after BHASVIC. Useful websites to research careers and wider progression options could include the Chartered Institute of Management, All About Careers and The Apprenticeship Guide.





# BUSINESS: BTEC LEVEL 3

## MINIMUM ENTRY REQUIREMENTS

C/4 in Maths GCSE or English Language GCSE. To see overall entry requirements to study at BHASVIC refer to page 136.

## WHAT WILL I STUDY

This vocational course will allow you to study topics such as business development and strategy, leadership and management, financial planning and accounting, marketing, event management, and international business. You will study real business successes and failures. This course will give you the equivalent of one A level. In each year 3 out of 4 topics will be studied by completing coursework investigating at least one actual business. The 4th topic is assessed through an exam. You will develop your skills of independent learning, research, problem solving and organisation. Organisation is important so you can cope with the significant workload of completing weekly coursework activities. Analysing data and communicating using written, numerical, visual and verbal methods are all part of the course. Before and throughout the course students are encouraged to read up on businesses (brands, sports clubs, festivals, cars etc) that they are interested in. Students are also expected to take an interest in current business news so that they can begin to understand the causes and effects of consumer, business and Government behaviour.

## IS THIS COURSE RIGHT FOR ME

This course is ideal for students who are passionate about business and are either planning on starting up their own business or pursuing a career in business. It is a subject that requires students to learn theories, apply them to real businesses through their research, and assess their effectiveness. The course will suit you if you prefer coursework to exams and want the chance to carry out a detailed investigation of different businesses. You do need to be able to cope with constant and tight deadlines. There is a significant element of reading and writing because of the coursework, but also an expectation that students discuss and question at every opportunity. Students are expected to study given business theory before every week so that we can use this self-taught knowledge to explore real business case studies and effectively answer coursework activities. Students will need to manage multiple assignments so organisation is very important.

## WHERE NEXT

There are many routes of progression after this Level 3 BTEC Business course. There is a wide variety of courses for the subject, both on its own or combined with other subjects. Some students choose employment and the subject is, understandably, approved by employers.





# CHEMISTRY: A LEVEL

## MINIMUM ENTRY REQUIREMENTS

B/5 in Maths GCSE and 2 B/6s in 2 Sciences at GCSE including Chemistry or Additional Science (not Applied Science). To see overall entry requirements to study at BHASVIC refer to page 136.

## WHAT WILL I STUDY

You will learn about atoms, compounds, acid-base and redox reactions. You will learn why things happen and why they sometimes don't! We consider entropy and free energy, the transition elements and organic chemistry in detail in the second year. Lessons contain practical work and problem solving. Practical work is an important aspect, and students generally do one a week (no separate coursework component); students keep a lab book to evidence their skills. Please note that to support you in your success in this A level, the college may ask you to study one lesson per week of specialised mathematical support, targeted specifically at the content of this A level.

## IS THIS COURSE RIGHT FOR ME

Chemistry is right for you if you enjoy problem solving and like to know why things happen. Chemists are interested in applying their knowledge to practical situations. You should be able to work in groups and have the ability to focus independently. Students will succeed most if they are self-motivated independent learners. Flipped learning is used for all topics, lessons are interactive and build upon independent study. There are lots of opportunities to get help and support from the department. Good numeracy and literacy skills are essential. A small percentage of the assessment will be pure recall – instead students are required to apply their knowledge to novel situations and be able to interpret data and draw conclusions. Good with Biology, Maths, Physics, Environmental Science.

## WHERE NEXT

Chemistry is essential for a large number of careers including medicine, pharmacy, veterinary science and dentistry. Students could also progress into careers in pharmaceuticals, food technology, manufacturing, petrochemicals, journalism and publishing, sales, forensics and teaching. Chemistry helps you to develop research, problem solving and analytical skills. It helps you challenge ideas as well as working out solutions through logic and step-by-step reasoning. This subject also often requires teamwork and communication skills too, which are useful when working on projects. Useful websites to research careers and wider progression options could include The Royal Society of Chemistry, Chemistry World, All About Careers and The Apprenticeship Guide.







# CLASSICAL CIVILISATION: A LEVEL

## MINIMUM ENTRY REQUIREMENTS

C/4 in English Language GCSE. To see overall entry requirements to study at BHASVIC refer to page 136.

## WHAT WILL I STUDY

Classical Civilisation is a fascinating subject which fosters an understanding of ancient Greece and Rome. This allows for a greater understanding of our own culture and civilisation, which owes so much to Greece and Rome. Democracy, justice, empire and conflict are just some of the many concepts that will underpin your study. You will learn about some of the greatest figures in world history such as the heroic figures of Homer's epics: Odysseus, Achilles, Hector, Aeneas and Helen of Troy. You will also be introduced to some of the major political figures including Julius Caesar, Cicero, Pompey, Themistocles, Xerxes and Leonidas. Students will also learn about some of the great battles of the past such as Thermopylae, Salamis and Troy. The vibrant works of Homer, Cicero, Virgil and Herodotus are our starting point to investigate the beliefs, history, myth and society of antiquity. You will study ancient epic, history, drama and politics.

## IS THIS COURSE RIGHT FOR ME

Do you love ancient history? Do you enjoy ancient myths and legends? Do you spend a lot of your free time reading? Did you enjoy watching films set in the ancient world like 300, Pompeii, Rome or Clash of the Titans? All of these would be an advantage to students taking the subject. Students will succeed best on this course if they are self-motivated and independent learners willing to share their ideas, and participate in discussions, debates and seminars. Students need to be able to structure well-balanced arguments in essay-style questions. It presupposes no knowledge of ancient languages and will appeal to anyone interested in the ancient past. Texts are studied in English translation and you are assessed entirely by examination. It combines especially well with all humanities, language and literature courses and is supported by study visits abroad.

## WHERE NEXT

Classical Civilisation is a well-respected qualification that enables you to study a mixture of classics, history and literature. It develops a wide range of skills that are transferable to further study or the workplace such as analytical skills, communication, critical evaluation, cultural awareness and assessing and interpreting information. Students move on to a range of roles; examples might be Chartered Accountant, Civil Service employee, Heritage Manager, Market Researcher, Curator and Journalist. Apprenticeship routes are available in a variety of sectors, not only in the cultural and heritage sector. Useful websites to research careers and wider progression options could include Prospects, Museum and Heritage websites, All About Careers and The Apprenticeship Guide.





# COMPUTER SCIENCE: A LEVEL

## MINIMUM ENTRY REQUIREMENTS

B/6 in Maths GCSE. You do not need to have studied Computer Science or IT at GCSE/ Level 2. To see overall entry requirements to study at BHASVIC refer to page 136.

## WHAT WILL I STUDY

You will spend two years becoming a strong programmer who is able to use a range of different languages and programming styles. Through this, you will learn how different algorithms are used to solve different types of problem. You will also cover a wide range of computing theory topics, learning more about how computer systems use logic, Boolean algebra, binary and hexadecimal number systems, how IDEs translate code and run it, different types of uses for today's processors, how operating systems manage a computer, networks and how they direct traffic, web technologies and the databases behind them. As part of the course you will undertake a complex project worth 20% of your A level. The project allows you to pursue something of personal interest. Many students choose to develop a game or app for mobile platforms / PCs, a website with a back-end database, or use Raspberry Pi's for hardware related ideas e.g. remote-controlled home management systems.

## IS THIS COURSE RIGHT FOR ME

Even if you haven't studied Computer Science before, if you enjoy problem solving and are logical and good at Maths then this is the right course for you. Studying Computer Science will give you a great head start if you want to go on and study a technology-based subject at a higher level. Many of our students study Maths and Physics alongside, our BTEC courses in either Computing or IT also work well with this course, as well as other science A levels. The course has a lot of mathematical content, from the decision-type maths area. If you choose not to study Maths A level it may make understanding some of the theoretical aspects tough and limit some options for Higher Education.



## WHERE NEXT

A vast array of jobs exists within the field of Computer Science including Analyst, Programmer and Developer roles. There are opportunities within many sectors such as telecommunications, aerospace and defence, financial services, healthcare, manufacturing, public and third sectors. This course enables progression into Higher Education in a wide range of degree areas such as computing, engineering and mathematics. Equally, the course supports direct entry into the computing industry e.g. apprenticeships in Digital Cyber Security. A Degree Apprenticeship in Software Engineering (where you earn a salary and have your University fees paid for) is another possible progression route from this course. Useful websites to research careers and wider progression options could include The Tech Partnership, Target Careers, BCS The Chartered Institute for IT, All About Careers and The Apprenticeship Guide.





# COMPUTING: BTEC LEVEL 3 (GAMES, APPS & ENCRYPTION – SINGLE)

## MINIMUM ENTRY REQUIREMENTS

C/4 in English Language GCSE and C/4 in Maths GCSE. To see overall entry requirements to study at BHASVIC refer to page 136.

## WHAT WILL I STUDY

You will develop your programming ability in several languages and learn how to build apps to demonstrate your skills. You will investigate security threats to data and plan and apply techniques to defend against security attacks on IT systems. You will explore how encryption protects data, learn more about how computer systems work, hardware and software, the way components of a system work together and how data in a system is used.

## IS THIS COURSE RIGHT FOR ME

This course is the equivalent of an A level. It is suitable for those with a clear interest in programming and Computing as a subject area. Although it IS NOT a requirement, ideally you will have studied Computer Science at GCSE. It matches well with: Computer Science A level, IT BTEC, Maths A level, Physics A level or related courses in science, economics or business.

## WHERE NEXT

This course provides a strong core study of computer science to enable progression into Higher Education, with a focus on areas such as cyber-security and programming. It is also a good foundation for degrees where computing-related skills and knowledge may be advantageous, such as business studies, sciences and engineering. Equally, the course supports direct entry into a range of careers in the computing industry. A degree apprenticeship (where you earn a salary and have your University fees paid for) is another possible progression route from this course.





# CREATIVE DIGITAL MEDIA: BTEC LEVEL 3 FILM AND TELEVISION PRODUCTION (DOUBLE)

## MINIMUM ENTRY REQUIREMENTS

There is no requirement to have a C/4 in GCSE English for this course. However, students are required to have a level of camera and editing experience that will be assessed at interview, by submitting a portfolio of two artefacts (either web address for online artefacts, DVD, or memory stick). To see overall entry requirements to study at BHASVIC refer to page 136.

## WHAT WILL I STUDY

This largely practical course focuses on developing the technical skills required for working in film and television production. The units covered allow you to develop a professional understanding of the industry and the skills required to work within it. You will work in partnership with real media companies, pitching and producing work that responds to real briefs. You will work in production crews to script, storyboard, produce (both using single camera and multi camera shoots), edit and present documentary, film and television products. Productions will include stop-motion, music videos, short narratives and advertising and marketing. There are two external set practical examinations which are completed in timed conditions.

## IS THIS COURSE RIGHT FOR ME

If you currently enjoy making your own media and film products, and are keen to develop industry-standard technical skills, this is the right course for you. This course is ideal for you if you already showcase your work on a website or YouTube channel, or if you'd like to do so in the future. Throughout the course, you'll be able to create a portfolio of work that you can show to future employers and universities. This course requires a real time commitment from students. You will produce at least four practical pieces, which require group work outside of lessons, as you will be storyboarding, shooting and editing footage. This largely takes place at weekends, so students need to be really committed to pursuing a media career. It goes well with Media Studies, Film Studies, Graphic Design; IT or Computer Science.

## WHERE NEXT

This qualification is the equivalent of two A levels and carries UCAS points. This course will prepare you for working in the creative industries, or for entry onto a practical course at University. At the end of the course, you will have a portfolio of work to take to University or job interviews.



A portrait of a young woman with long, light brown hair and blue eyes, wearing a beige blazer over a white top. She is smiling slightly and looking directly at the camera. The background is a blurred outdoor setting with a brick wall and a green door.

“I’ve learnt the full extent  
of jobs available in the  
film industry.”

Alice-Rose, Creative Digital Media  
Formerly of Tideway



# CREATIVE MEDIA PRODUCTION: BTEC LEVEL 3 (SINGLE)

## MINIMUM ENTRY REQUIREMENTS

C/4 in English Language GCSE. You will be required to have a level of camera and editing experience which will be assessed at interview. To see overall entry requirements to study at BHASVIC refer to page 136.

## WHAT WILL I STUDY

This practical course focuses on developing your communication, pre-production, production and post-production skills that are required for working in the film and television industry. Each year, you will be given the opportunity to explore two practical productions: factual television and a short narrative production (year 1) and a music video and social action and community media (year 2). Alongside this you will develop knowledge and understanding of pre-production techniques, communication skills and research techniques. You will work in production crews to set internal assignment briefs and develop a production from its initial treatment and pitch to its final individual export.

## IS THIS COURSE RIGHT FOR ME

Creative Media Production is an exciting and challenging course which encourages you to critically engage with and evaluate a broad range of moving image products. The course is designed to provide an educational foundation for a range of careers in the media industry and allied sectors. The practical aspect of the course requires a commitment from students to work outside of their lessons and will allow students the opportunity to develop their skills in camera, editing and project management.

## WHERE NEXT

This qualification is the equivalent of one A level. This course will prepare students for working in the creative industries as well as preparing students for entry onto a practical degree at University. At the end of the course, you will have a portfolio of work to take to University or job interviews. Possible future careers might include Journalist, Media Planner, Social Media Manager, Technician, Researcher, Digital Marketer and Advertising Officer. Useful websites to research careers and wider progression options could include Creative Skillset, Hive, All About Careers and The Apprenticeship Guide.





# CRIMINOLOGY: WJEC APPLIED LEVEL 3 (SINGLE)

## MINIMUM ENTRY REQUIREMENTS

General college entry requirements. To see overall entry requirements to study at BHASVIC refer to page 136.

## WHAT WILL I STUDY

There are four areas to study:

**Unit 1 (year 1) Changing awareness of crime:** At the end of this unit, you will have developed skills to differentiate between myth and reality when it comes to crime and to recognise that common representations may be misleading and inaccurate; the importance of changing public perceptions of crime; the skills to plan a campaign for change in relation to crime; for example to raise awareness, change attitudes or change reporting behaviour.

**Unit 2 (year 1) Criminological theories:** At the end of this unit you will have developed the skills to evaluate some criminological theories (why do people commit crimes?) and know there are debates within the different theories. You will understand how changes in criminological theory have influenced policy. You will also have gained the skills to apply the theories to a specific crime or criminal in order to understand both the behaviour and the theory.

**Unit 3 (year 2) Crime Scene to Court Room:** At the end of this unit you will have developed the skills to analyse evidence, review criminal cases and evaluate the evidence in the cases to determine whether the verdict is safe and just.

**Unit 4 (year 2) Crime and Punishment:** At the end of this unit, you will consider such questions such as 'Why do most of us tend to obey the law even when to do so is against our own interests?', 'What social institutions have we developed to ensure that people do obey laws?', 'What happens to those who violate our legal system?', 'Why do we punish people?', 'How do we punish people?', 'What organisations do we have in our society to control criminality or those who will not abide by the social rules that most of us follow?', 'We spend a great deal of taxpayers' money on social control, so how effective are these organisations in dealing with criminality?'.



## IS THIS COURSE RIGHT FOR ME

This Level 3 Diploma is offered to students who have a keen interest in crime. You need to be non-judgemental, be very interested in people, society and crime, be able to work under pressure, look to make contacts outside of college, be innovative and really motivated. It is an intense two year course for 4.5 hours per week. There will be regular homework and assignments, you have to be happy to make presentations to the class and work in groups. The course is taught in the same way as A levels are taught, with the same expectations on students to achieve high standards in their work. Students may find some of the content disturbing given the nature of crime, although all topics are handled sensitively.

## WHERE NEXT

UCAS points: An A\* grade would receive 56 UCAS points. The main purpose of the WJEC Level 3 Applied Diploma in Criminology is to use the qualification to support access to Higher Education degree courses, and would be especially useful if applying for; BSc Criminology, BA Criminology, BA Criminology and Criminal Justice, BSc (Hons) Criminology and Psychology, LLB (Hons) Law with Criminology, BA (Hons) Criminology and Sociology, BA (Hons) Criminology, BSc (Hons) Psychology and Sociology, BSc Criminology with Law. Alternatively, the qualification allows learners to gain the required understanding and skills to be able to consider employment within some aspects of the criminal justice system, e.g. the National Probation Service, the Courts and Tribunals Service or the National Offender Management Service.





# DANCE: A LEVEL

## MINIMUM ENTRY REQUIREMENTS

C in Dance GCSE if taken or Grade 5 ballet: an audition at enrolment time is required if neither is held. To see overall entry requirements to study at BHASVIC refer to page 136.

## WHAT WILL I STUDY

This exciting course will help to develop you as a dancer, performer, choreographer and critic. You will be taught professional repertoire from some of the leading professional dance companies in the UK and abroad and you will be given the tools to create your own choreography. Through studying the work of others you will also develop skills of analysis. Assessment is 50% practical (performance in a solo and a quartet/group choreography) and 50% written. Dance Technique: In addition to your core hours you will receive weekly dance technique classes.

## IS THIS COURSE RIGHT FOR ME

Dance at BHASVIC achieves outstanding results with 100% achieving A\* - B last year putting us in the top 5% nationally. We believe this is because we offer a supportive and creative learning environment fostering individual talent in dance. If you enjoy watching and analysing dance, are happy to perform and are willing to try out new ideas then we think you will really enjoy the course. There is a £100 charge for attending performances and participating in workshops throughout the two years of this course. Bursaries and payment plans are available.

## WHERE NEXT

Our students have had great success after studying with us, attending dance conservatoires such as Rambert, London Contemporary Dance School, Trinity Laban and Northern School of Contemporary Dance. Many students have also gained places at London Studio Centre, Bird, Laines and Urdang. Possible related careers could include Professional Dancer, Choreographer, Dance Teacher/Instructor, Community Dance Practitioner, Dance Movement Specialist, Dance Company Manager or an Education Officer for Dance Companies. Useful websites to research careers and wider progression options could include One Dance, All About Careers and The Apprenticeship Guide.



## STUDENT PROFILE

# Liam

**PREVIOUS SCHOOL:**  
Seahaven School

**STUDYING A LEVELS IN:**  
Dance

It's always such a pleasure to come back to BHASVIC. It really is wonderful what you're offering the students and the care and effort you put in. I hope they know how

lucky they are. We teach a lot of workshops around the UK and they're a very lucky group to have such a great team teaching them!



# DRAMA AND THEATRE: A LEVEL

## MINIMUM ENTRY REQUIREMENTS

C/5 in English Literature GCSE. To see overall entry requirements to study at BHASVIC refer to page 136.

## WHAT WILL I STUDY

The new linear A level course requires students to take a practical and academic exploration of Theatre. Students are expected to take part in practical projects and apply practitioner ideas as well as produce creative logs and write academically reasoned essays on current theatre practice. There are three components to the course. In Components One and Two you will rehearse and explore text and perform pieces, both script based and devised, to an external examiner and audience. These pieces are supported by written work which outlines your processes of investigation. For Component Three you will undertake a written exam which will focus on three different plays which you will have studied over the two years of the course, looking at staging the plays from the point of view of a director, actor and designer.

## IS THIS COURSE RIGHT FOR ME

If you enjoy watching theatre, are happy to perform and are willing to try out ideas in a workshop environment then you will enjoy the course. The ability to work as part of a team is essential. There are many opportunities to practically apply your skills as a performer. More challenging areas would include essay writing and the application of theory to practice. Assessment is 40% practical and 60% written. This subject would suit students who are interested in studying any humanities subjects such as English Literature and Language as well as History and Classics. Additionally it sits well alongside social sciences such as Psychology and Sociology. There is a £150 charge for attending performances throughout the two years of this course. Bursaries and payment plans are available.



## WHERE NEXT

The study of Drama and Theatre Studies at A level can help students with a variety of skills as well as develop their creative career aspirations. Students who study this course will enhance their skills in creative thinking, teamwork, analysis, presentation skills, planning etc. The course supports students wishing to improve their communication skills in both verbal and written forms. Students can progress from this course in to a number of career areas either by further study or by direct entry to the job market. The skills you gain while studying a performing arts degree are valued by all types of employers, for example confidence, self-presentation, teamwork and collaboration, ability to experiment with different ideas and learning from feedback. Examples of related roles that students may pursue could include Actor, Stage Manager, Arts Administrator, Dramatherapist and Television Production Assistant. Useful websites to research careers and wider progression options could include Creative Skill Set, All About Careers and The Apprenticeship Guide and Equity (career factsheets).





# ECONOMICS: A LEVEL

## MINIMUM ENTRY REQUIREMENTS

C/4 in Maths GCSE and C/4 in English Language GCSE. To see overall entry requirements to study at BHASVIC refer to page 136.

## WHAT WILL I STUDY

You will study how economies allocate their scarce resources to meet the needs and wants of their citizens, and learn about the economic problems which face individuals, firms and governments on a local, national and global level and the alternative ways these problems can be resolved. Macro-Economics investigates the working of the whole economy; analysing possible causes of inflation, unemployment, and the effects of government intervention. You will also examine the complex interdependence between economies. Micro-Economics examines the way in which the price system of free enterprise economies allocates scarce resources. The new syllabus also includes concepts such as behavioural economics, which considers how consumers make decisions based on emotions rather than rationality, and the analysis of financial markets will also examine the complex interdependence between economies.

## IS THIS COURSE RIGHT FOR ME

Do you want to know why our government makes certain decisions? Do you enjoy the challenge of debating both sides of an argument? Economics helps to explain a wide variety of real-world phenomena such as economic growth and commodity prices and is a highly valued and respected A level. You should have an enquiring mind, for example, be interested in the effect of a falling value of the £ and how decisions taken by government affect choices which consumers make - taxing sugary drinks for example. There are a lot of new terms and theory. Students should be prepared to learn what can appear theoretical. Economics is a method or tool for analysing decisions. You should be prepared to study independently, there is much to cover so you have to read and learn between lessons. Showing genuine evaluation requires deep understanding. Students who enjoy and understand the logic of Maths will find a parallel in Economics and Maths is a prerequisite for many Economics degrees. Due to its breadth of relevance Economics complements any subject.



## WHERE NEXT

Economics students in the past have gone straight into jobs in the banking and finance sector but an A level in Economics can also lead to a range of occupations in the business sector, from HR to Marketing, where students need an understanding of the economy. Skills that can be obtained from studying Economics include, problem solving abilities, innovation, analytical skills, confidence with numbers, and economic awareness. Students can also go on to University to study Economics and related degrees. Careers that may follow from this include Actuarial Analyst, Chartered Accountant, Data Analyst, Economist, Financial Risk Analyst etc. Jobs where an economics qualification would be useful include Actuary, Civil Service Fast Streamer, Data Scientist, Local Government Officer and Quantity Surveyor. Useful websites to research careers and wider progression options could include Royal Economic Society, Target Jobs, All About Careers and The Apprenticeship Guide.





# ENGLISH: GCSE

## MINIMUM ENTRY REQUIREMENTS

D/3 or below in English GCSE. To see overall entry requirements to study at BHASVIC refer to page 136.

## WHAT WILL I STUDY

A range of fiction and non-fiction texts that require well written analytical responses to show a confident technical understanding of how writers use words and sentences to create their meanings. Students will also develop their own skills and ideas in writing and speaking.

## IS THIS COURSE RIGHT FOR ME

This is explicitly for students who didn't get the grade they wanted at GCSE and need to retake to get a C/4 or above.

## WHERE NEXT

This enables students to take or complete a range of Level 3 courses that require grade C/4 English GCSE.







# ENGLISH LANGUAGE: A LEVEL

## MINIMUM ENTRY REQUIREMENTS

C/4 in English Language GCSE. To see overall entry requirements to study at BHASVIC refer to page 136.

## WHAT WILL I STUDY

A wide range of everyday spoken and written texts along with the linguistic and grammatical concepts we need to analyse and explore how people are using their language to present their thoughts, feelings, values and identities in any situation. You may discover, as George Bernard Shaw writes, that "the majesty and grandeur of the English language [is] the greatest possession we have."

## IS THIS COURSE RIGHT FOR ME

If you find yourself listening in to conversations on the bus, analysing the headings to advertising posters or wondering at the words used in social media exchanges, you are a budding English Language expert and should do this course.

## WHERE NEXT

A good grasp of the English language, literacy and communication is essential in many careers. This subject will help to develop your critical and interpersonal skills. Every business, whether in the publishing industry, marketing or financial sectors, needs staff to present products and services in a professional and attractive manner. If you enjoy writing, you may find that you already have a number of the skills that employers are looking for. More and more businesses are increasing their online presence, and need articulate individuals to promote their products and services to a global audience. Roles can include apprenticeships in legal services, journalism, recruitment, digital marketing and social media amongst others. For students who wish to continue their studies to degree level there are a large number of options available, these include Digital Copywriter, Editorial Assistant, English as a Foreign Language Teacher, Web Content Manager. Possible future careers where English Language would be useful include: Academic Librarian, Advertising Account Executive, Arts Administrator, Information Officer, Primary School Teacher, Public Relations Officer etc. Useful websites to research careers and wider progression options could include NCTJ, All About Careers and The Apprenticeship Guide.





# ENGLISH LANGUAGE & LITERATURE: A LEVEL

## MINIMUM ENTRY REQUIREMENTS

C/4 in English Language GCSE. To see overall entry requirements to study at BHASVIC refer to page 136.

## WHAT WILL I STUDY

You will explore a wide range of texts including novels, stories and plays, as well as non-literary writing like magazine articles, webpages, autobiography, memoirs and personal writing such as letters, diaries, emails and texts or transcripts of conversations. Studying these texts will help you to think about how people use language to present their ideas and identities. You will be required to submit a piece of fictional creative writing and a piece of journalism for coursework.

## IS THIS COURSE RIGHT FOR ME

If you have enjoyed both your English GCSEs and particularly the creative elements of your English work; if you write your own stories, poems, articles, reviews in your own time; if you fancy yourself as a writer in the future and enjoy studying how other writers use language, you should do this course.

## WHERE NEXT

A good grasp of the English language, literacy and communication is essential in many careers. This subject will help to develop your critical and interpersonal skills. Every business, whether in the publishing industry, marketing or financial sectors, needs staff to present products and services in a professional and attractive manner. If you enjoy writing, you may find that you already have a number of the skills that employers are looking for. More and more businesses are increasing their online presence, and need articulate individuals to promote their products and services to a global audience. Roles can include apprenticeships in legal services, journalism, recruitment, digital marketing and social media amongst others. For students who wish to continue their studies to degree level there are a large number of options available, these include Digital Copywriter, Editorial Assistant, English as a Foreign Language Teacher, Web Content Manager. Possible future careers where English Language and Literature would be useful include: Academic Librarian, Advertising Account Executive, Arts Administrator, Information Officer, Primary School Teacher, Public Relations Officer etc. Useful websites to research careers and wider progression options could include NCTJ, All About Careers and The Apprenticeship Guide.







# ENGLISH LITERATURE: A LEVEL

## MINIMUM ENTRY REQUIREMENTS

C/4 in English Language GCSE. To see overall entry requirements to study at BHASVIC refer to page 136.

## WHAT WILL I STUDY

You will explore a range of exciting and challenging literary texts, including novels, poetry and plays from across the last 500 years as well as 21st century texts, all of which have stood the test of time and proved themselves to be great writing. You will study literature that has “never finished saying what it has to say.” You’ll be encouraged to read widely, independently and in-depth.

## IS THIS COURSE RIGHT FOR ME

Those who love reading literary texts, thinking about how they are written, who wrote them and what other readers think about them, discussing and writing about what they might mean should take this course.

## WHERE NEXT

A good grasp of the English language, literacy and communication is essential in many careers. This subject will help to develop your critical and interpersonal skills. Every business, whether in the publishing industry, marketing or financial sectors, needs staff to present products and services in a professional and attractive manner. If you enjoy writing, you may find that you already have a number of the skills that employers are looking for. More and more businesses are increasing their online presence, and need articulate individuals to promote their products and services to a global audience. Roles can include apprenticeships in legal services, journalism, recruitment, digital marketing and social media amongst others. For students who wish to continue their studies to degree level there are a large number of options available, these include Digital Copywriter, Editorial Assistant, English as a Foreign Language Teacher, Web Content Manager. Possible future careers where English Literature would be useful include: Academic Librarian, Advertising Account Executive, Arts Administrator, Information Officer, Primary School Teacher, Public Relations Officer etc. Useful websites to research careers and wider progression options could include NCTJ, All About Careers and The Apprenticeship Guide.





# ENVIRONMENTAL SCIENCE: A LEVEL

## MINIMUM ENTRY REQUIREMENTS

C/4 in 2 Sciences at GCSE and C/4 in English Language GCSE. To see overall entry requirements to study at BHASVIC refer to page 136.

## WHAT WILL I STUDY

You will explore the key challenges facing our planet and how the environment supports us, how we threaten these support systems and strategies for a more sustainable lifestyle. Studying wildlife conservation, resource management, energy use, pollution and food production you will develop in-depth understanding of the problems... and the solutions. The new specification covers many aspects of the world around us, including conservation methods, land use conflict, global climate change, pollution, energy resources, sustainable biological resources, evolution, biotechnology and ecosystems and population dynamics – it's a really good range of topics so that everyone will find areas that interest them! It is also very contextualised to relate it to how the world works around you.

## IS THIS COURSE RIGHT FOR ME

This subject is for you if you: have a real interest in the environment and its sustainable management; enjoy science and want to apply your understanding in real-world contexts; want to develop your skills in researching and evaluating information and analysing data; like debate and problem solving. You are most likely to succeed if you are a self-motivated independent learner. Lessons are interactive and build upon independent study. You should be willing to participate in topical discussions and debates, be able to structure well-balanced arguments in essay-style questions and use data from different sources to analyse results. Good with Biology, Chemistry, English, Geography, Maths, Psychology, Politics.



## WHERE NEXT

Your interest in the environment and ethical issues could lead you into a diverse world of career paths. If you are interested in sustainability, world resources or conservation then this could be the course that takes you towards a rewarding career. Possible related sectors include ecology and wildlife conservation, environmental science, agriculture, geography, geology or climatology. Students wishing to study this subject at degree level may also consider: Zoology, Marine Biology, Biotechnology, Animal Science, Sustainable Civil Engineering, Journalism, Urban Landscape Design etc. Environmental experts are needed in business, industry and government as well as estate management, land reclamation, countryside management and conservation. Useful websites to research careers and wider progression options could include The Chartered Institute of Ecology and Environmental Management (CIEEM), Institute of Environmental Management (IEMA), All About Careers and The Apprenticeship Guide.





# FILM STUDIES: A LEVEL

## MINIMUM ENTRY REQUIREMENTS

C/4 in English Language GCSE and English Literature GCSE. To see overall entry requirements to study at BHASVIC refer to page 136.

## WHAT WILL I STUDY

Film Studies is designed to explore and creatively engage with all aspects of filmmaking. It involves analysis of a wide range of texts, including British, American and European cinema, silent film, documentary and experimental film. You will analyse both the technical and creative choices made by film makers to produce meaning, as well as develop an understanding of how a film's production context affects the meanings it generates. Individually, you will also create a short film or a screen play (20% of the final grade). You will study twelve films and write analytical essays on them, focusing on spectatorship, aesthetics and film theory. You will be assessed on these in two written examinations.

## IS THIS COURSE RIGHT FOR ME

The subject contains a mixture of written analysis and practical work. The main focus is on critical analysis of film texts. You will develop an understanding of how the technical and creative aspects of film-making create meaning for audiences. You should enjoy watching a wide range of films, like sharing opinions on these with others and be able to write critically about films. Best suited to people who are strong writers, who enjoy watching and analysing a range of films (including World Cinema). Film Studies goes well with any theory-based, essay subject such as Media Studies, English Literature, History, Classics, Politics, Sociology etc. as well as Digital Creative Media, IT or Computer Science if you enjoy practical work.

## WHERE NEXT

There are far more job roles on offer in the Creative Industries than you might think. This course prepares you for the broad and amazing range of roles available in this sector but will also help you develop your critical and analytical skills. There is a practical element to the course, which makes it suitable for those who want to work in the film industry. Students will work on a project during their first year which will involve making a short film or a screenplay. Jobs directly related to this subject include Film/Video Editor, Location Manager, Programme Researcher, Runner, Broadcasting/ Film/Video. Jobs where this subject may be beneficial are: Broadcast Engineer, Broadcast Journalist, Television Camera Operator and Television Floor Manager. Useful websites to research careers and wider progression options could include Creative Skillset, Creative Choices, All About Careers and The Apprenticeship Guide.



**I've learnt so much about  
how films are constructed.**

**Louie, Film Studies A level**  
Formerly of Varndean School



# FRENCH: A LEVEL

## MINIMUM ENTRY REQUIREMENTS

B/6 in French GCSE and C/4 in English Language GCSE. To see overall entry requirements to study at BHASVIC refer to page 136.

## WHAT WILL I STUDY

You will learn to communicate fluently in the language both orally and in writing. You will read and listen to authentic material in order to develop your comprehension skills and your knowledge of the culture. You will study topics, literary texts and films relevant to the country/countries where the language is spoken.

## IS THIS COURSE RIGHT FOR ME

Did you enjoy the language at GCSE? Do you want to become fluent and develop your linguistic and cultural knowledge? Good linguists are risk takers and naturally inquisitive. At this level you need to be rigorous in your learning and very accurate in your application of knowledge. This course will give you an insight into cultural and political issues in the Francophone World.

## WHERE NEXT

Language learning is inextricably bound up with history, culture, business and economics. There are well attested advantages of speaking more than one language. Linguists are increasingly in demand in many sectors of industry. You may consider a degree purely in Languages / Linguistics / European Studies, leading to a wide variety of careers including, but not limited to, Translation, Interpreting, Teaching, Publishing, Journalism and Marketing. A language can also be combined with most subjects at Higher Education level, for example Law, International Relations, Politics, Media, Business or Sciences. Awareness of a foreign language is also an asset when applying for apprenticeships. Jobs where this is particularly useful are Cabin Crew, Travel Services, Customer Service and Relations, Events Assistants and Public Services. Useful websites to research careers and wider progression options could include Planit plus, All About Careers and The Apprenticeship Guide.







# GEOGRAPHY: A LEVEL

## MINIMUM ENTRY REQUIREMENTS

C/4 in English GCSE and C/4 in Science GCSE. C in Geography GCSE, if taken. To see overall entry requirements to study at BHASVIC refer to page 136.

## WHAT WILL I STUDY

“Geography is the study of Earth’s landscapes, peoples, places and environments. It is, quite simply, about the world in which we live. Geography is unique in bridging the social sciences (human geography) with the natural sciences (physical geography)” [Royal Geographical Society]. Geography investigates current issues through the study of natural and human environments from a local to global scale. Topics covered in the first year include Coastal Landscapes, Globalisation, Tectonic Processes and Hazards, Diverse Places and the Water Cycle and Water Insecurity. In the second year we will study Superpowers, Climate Change, The Carbon Cycle, Identity and Sovereignty and Migration. Students also complete an independent piece of coursework in the second year. You will also be expected to learn and use case studies. These are in-depth examples that focus on a located and defined area or event. They should be used to supply the evidence necessary for essays and other long answers on a topic. While you will be provided with a selection of case studies, you will also be encouraged to develop your own.

## IS THIS COURSE RIGHT FOR ME

Geography suits a wide range of students. It develops skills such as extended writing, numerical and data analysis, IT research, mapping, fieldwork and coursework skills. It combines well with other subjects from the arts or sciences. You will be offered opportunities to visit a variety of sites and locations, some of which are compulsory and others which are recommended but optional. This will include fieldwork in the local area, and opportunities to visit other significant local sites, as well as the option of a foreign trip (Croatia and France have been previous destinations). We organise lectures by University academics and professionals. A successful Geography student would: take an interest in the world around you, do extra “reading around the subject” not just doing work which you have been set, arrive fully prepared for lessons, learn and use appropriate terminology, be prepared to have a go at more advanced activities and both ask and answer questions in class. The course is 20% coursework, and 80% external exam. This subject goes well with Humanities subjects such as History, Classical Civilisation and English Literature or Language. Additionally it complements science. There is a £50 charge to contribute towards field trip costs during the two years of this course. Bursaries and payment plans are available.

## WHERE NEXT

The wide range of skills developed by studying Geography means that students are highly valued by employers, and Geographers are usually near the top of graduate employment tables. Geography degrees lead to a BSc or a BA degree depending on the balance of Physical or Human Geography involved (BA is normally more Human Geography). Some related degree areas could include Anthropology, International Development, International Relations and Earth Sciences. Job roles in this sector can be found in Teaching, Environment, Energy and Sustainability, Geographical Information Systems, Planning and Development Surveying. Jobs where this subject may also be useful include Logistics and Distribution Manager, Market Researcher, Sustainability Consultant and Tourism Officer. Useful websites to research careers and wider progression options could include Royal Geographical Society, All About Careers and The Apprenticeship Guide.





# GERMAN: A LEVEL

## MINIMUM ENTRY REQUIREMENTS

B/6 in German GCSE and C/4 in English Language GCSE. To see overall entry requirements to study at BHASVIC refer to page 136.

## WHAT WILL I STUDY

You will learn to communicate fluently in the language both orally and in writing. You will read and listen to authentic material in order to develop your comprehension skills and your knowledge of the culture. You will study topics, literary texts and films relevant to the country/countries where the language is spoken.

## IS THIS COURSE RIGHT FOR ME

Did you enjoy the language at GCSE? Do you want to become fluent and develop your linguistic and cultural knowledge? Good linguists are risk takers and naturally inquisitive. At this level you need to be rigorous in your learning and very accurate in your application of knowledge. This course will give you an insight into cultural and political issues in the German Speaking World.

## WHERE NEXT

Language learning is inextricably bound up with History, Culture, Business and Economics. There are well attested advantages of speaking more than one language. Linguists are increasingly in demand in many sectors of industry. You may consider a degree purely in Languages / Linguistics / European Studies, leading to a wide variety of careers including, but not limited to, Translation, Interpreting, Teaching, Publishing, Journalism and Marketing. A language can also be combined with most subjects at Higher Education level, for example Law, International Relations, Politics, Media, Business or Sciences. Awareness of a foreign language is also an asset when applying for apprenticeships. Jobs where this is particularly useful are Cabin Crew, Travel Services, Customer Service and Relations, Events Assistants and Public Services. Useful websites to research careers and wider progression options could include Planit plus, All About Careers and The Apprenticeship Guide.







# GRAPHIC DESIGN AND COMMUNICATION: A LEVEL

## MINIMUM ENTRY REQUIREMENTS

No specific subject entry requirement. To see overall entry requirements to study at BHASVIC refer to page 136. A charge for materials applies to Graphic Design and Communication, bursaries and payment plans are available.

## WHAT WILL I STUDY

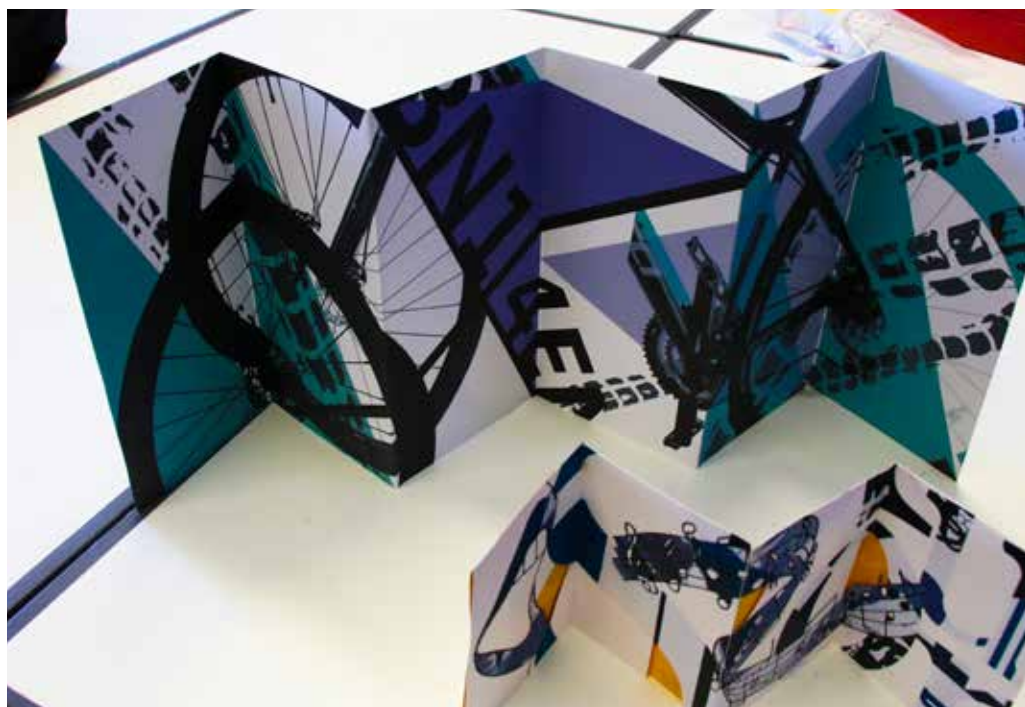
Our grade one outstanding course is broad and experimental in approach and includes one or more areas of graphic communication with the possibility of exploring a combination: illustration, advertising, packaging design, design for print, communication and computer graphics, multimedia, animation, web design, film, television and/or video. You will create design work to solve graphical problems and address commercial briefs.

## IS THIS COURSE RIGHT FOR ME

Are you ambitious, motivated and creative? This course is a practical making/creating course which uses a vast range of specialist materials and art techniques, it is 60% practical portfolio and 40% practical exam. The first year of our Practical Portfolio component builds knowledge, understanding/skills through working on themes; the second year becomes more focused on you and the development of your personal ideas and professional practice. A charge of £180 applies to contribute towards the cost of materials used during the two years of this course, bursaries and payment plans are available. You are given a generous allocation of colour printer credits per component of work and once you have used them up you top them up at your own expense.

## WHERE NEXT

From working for a design consultancy to setting up your own business, the skills gained from studying A level Graphic Design can open up possibilities to an exciting range of career paths. Future related careers could be working as an Advertising Art Director, Illustrator, Production Designer, Exhibition Designer, Interior Designer and Web Designer. The college has a supportive and structured Visual Arts career progression pathway in the second year of study to help students explore their next steps. There are a wide range of options available after studying this subject which might include Higher Education courses at Universities as well as Further Education courses. Additional options include apprenticeships in Graphic Design, Social and Digital Media, Marketing and Advertising. Useful websites to research careers and wider progression options could include Creative and Cultural Skills, The Creative Industries, Wired Sussex, All About Careers and The Apprenticeship Guide.





# HEALTH AND SOCIAL CARE: BTEC LEVEL 3 (SINGLE)

## MINIMUM ENTRY REQUIREMENTS

C/4 in English Language or English Literature GCSE. To see overall entry requirements to study at BHASVIC refer to page 136.

## WHAT WILL I STUDY

You will study human lifespan development and meeting individual needs and support needs; also physiological disorders and their care. You will learn the theoretical basis for providing good quality care, examining how practitioners use legislation, policies, and communication to implement professional practice. Coursework is based around applying knowledge learnt to a Health and Social Care setting so is very vocational. The college can help to place students in work experience placements. Some second year students may have the option of a hospital placement at Brighton and Sussex University Hospital.

## IS THIS COURSE RIGHT FOR ME

This course is ideal for students planning on a career within Health and Social Care. The BTEC Extended Certificate is equivalent to one A level (2 years) and students must have a commitment to continued assessment via course work. Work experience will be required of all students regardless of level of study. The elements that usually supply the greatest areas of challenge are the unit on Anatomy and Physiology and the sheer amount of coursework. You must be very organised. Students will need to manage multiple assignments for possibly 1-3 teachers at the same time so being organised is very important. There will be at least two exams plus coursework. Complementary subjects are Medical Science, Psychology, Sociology, Biology.

## WHERE NEXT

There is a growing demand within this sector and there are a diverse range of opportunities where students can make a real difference to the lives of others including adults, young people and children. Studying Health and Social care can take students in a wide range of directions depending on where their interests lie. Future related careers available in the healthcare and education sectors could include Nurse, Midwife, Social Worker, Mental Health Worker, Counsellor, Personal Assistant, Early Years Teacher and Play Therapist. There are opportunities to progress into management of services and continue training with additional qualifications in the workplace. This subject is ideal for progression onto vocational degrees at University and also provides an excellent foundation for anyone wanting to go directly into an apprenticeship or employment. During your studies, you will develop an awareness of the importance of values and skills for working in this sector that employers will be looking for. Useful websites to research careers and wider progression options could include Skills for Care, Health Careers, All About Careers and The Apprenticeship Guide.







# HISTORY: A LEVEL

## MINIMUM ENTRY REQUIREMENTS

C/4 in English Language GCSE. To see overall entry requirements to study at BHASVIC refer to page 136.

## WHAT WILL I STUDY

Common to each of our History courses are narratives that are full of intrigue, heroism, conflict and struggle. You will investigate some of the greatest personalities and events of the past: William the Conqueror, Lenin, Mao, the Crusades, the struggle for democracy and equality in Britain, the Cold War. Each of these topics illuminates the present whilst being fascinating in their own right.

## WHEN APPLYING PLEASE DECIDE BETWEEN ONE OF THE TWO OPTIONS BELOW TO STUDY.

### HISTORY A LEVEL (MEDIEVAL AND EARLY MODERN)

You will study "Conquest, Crusade and Control in the Medieval and Early Modern World"

Paper 1: The Crusades c.1095-1204

Paper 2: Anglo-Saxon England and the Anglo-Norman Kingdom c.1053-1106

Paper 3: The witch craze in Britain, Europe and North America, c 1580-1750

Paper 4/Coursework:

The Origin of the English Civil War. The course is 20% coursework, and 80% external exam.

### HISTORY A LEVEL (MODERN)

You will study "Democracy, Dictatorship and Social Change in the Modern World"

Paper 1: Russia from Lenin to Yeltsin 1917-91

Paper 2: Mao's China 1949-76

Paper 3: Protest, Agitation and Parliamentary Reform in Britain c.1780-1928

Paper 4/Coursework:

The Origin of the Cold War. The course is 20% coursework, and 80% external exam.



## IS THIS COURSE RIGHT FOR ME

Do you want to discover more about the most significant events and people in history? Are you fascinated about what we may be able to learn from the past? Do you enjoy discussion, debate, reading and research? History encourages independent thinking and really suits students who enjoy reading, questioning and debate. Lessons will mainly be seminar style and your learning is supported by foreign and local trips, University study days and student conferences. History is even more engaging when it is seen in action. We invite visiting academics, take trips to local historical sites such as Battle, Pevensey and the Banqueting House; arrange study and lecture conferences; visit universities and their archives and other major museums such as the National Portrait Gallery, British Army Museum and Mary Rose. We also have a fantastic history of foreign travel, including recent trips to China, Russia, Germany, Italy, and Sicily.

## WHERE NEXT

History is a highly esteemed qualification as it develops rigorous analytical, evaluative and communication skills which are transferable to further study of the subject. This may be through University, Further Education, direct entry into apprenticeships or work. History is very highly regarded by universities and employers for its rigour and the skills that you gain can take you in many varied and interesting career directions including academia, the media, business and the legal professions. Jobs which directly relate to the subject might include Heritage Manager, Conservation Officer, Museum Education or Curation and Teaching. Jobs where this subject would be useful might include Archivist, Journalist, Civil Service, Information Officer, Solicitor or a PPC Specialist. Useful websites to research careers and wider progression options could include the Historical Association, National Trust, All About Careers and The Apprenticeship Guide.



# IT: BTEC LEVEL 3 (DIGITAL MARKETING & WEB DESIGN – SINGLE)

## MINIMUM ENTRY REQUIREMENTS

C/4 in English Language GCSE. To see overall entry requirements to study at BHASVIC refer to page 136.

## WHAT WILL I STUDY

You will explore social media websites, the ways they can be used to promote products and services and the potential pitfalls when using them for business purposes. You will develop a social media strategy for a business and implement it, developing and posting content and interacting with others. You will also learn about IT systems and the design, creation, testing and evaluation of a relational database system to manage information.

In Year 2 you will also learn the creative, technical and scripting skills needed to be a website developer.

## IS THIS COURSE RIGHT FOR ME

This course is the equivalent of an A level. The nature of IT and its use throughout all aspects of modern society means that it is useful both for students with a wide range of interests as well as by those with a clear focus on this area. The latter often combine this course with one or more from: Computer Science A level, Computing BTEC, Business Studies A level and BTEC, Graphics A level, and related courses in Media, Economics or Sciences.

## WHERE NEXT

This qualification will also give you broader skills which can be transferable to most sectors of the economy. Students can continue with their studies to progress to a University degree which may be broader than the subject, such as Engineering, Artificial Intelligence and Games Development. The course also prepares students for direct entry into a range of careers in the computing industry through apprenticeships or work such as Social Media Specialist, Content Developer, Web Developer and IT Project Manager.







# LAW: A LEVEL

## MINIMUM ENTRY REQUIREMENTS

B/6 in English Language or Literature GCSE. To see overall entry requirements to study at BHASVIC refer to page 136.

## WHAT WILL I STUDY

This course develops your knowledge and understanding of our legal system, including the court system and legal personnel, how Acts of Parliament are made, and the nature of Law, enabling you to gain an understanding of more conceptual issues such as themes of morality and justice. Brought to life through discussions of important legal issues, evaluation of key cases, trips and visiting speakers, you will also study Criminal Law, covering areas such as murder, manslaughter, intoxication and insanity, and the Law of Tort, covering topics such as negligence, nuisance and occupiers' liability. You will then get the choice to study either Human Rights Law or the Law of Contract. Contract Law includes formation of a contract, offer and acceptance, implied terms and remedies available when these terms are broken, and the Human Rights option focuses on the nature, protection, restriction and constitutional position of human rights under UK law.

## IS THIS COURSE RIGHT FOR ME

Do you enjoy debating, expressing your opinions and justifying them based on evidence? Do you enjoy reading and expressing yourself in writing? Thinking of a career in Law, or intending to study Law at University? Do you know your rights and responsibilities? Do you want to study a 'new' subject? If the answer is yes to any of the above questions then this is the right course for you.

## WHERE NEXT

Studying A level Law gives students many transferable skills such as problem solving, critical analysis and negotiation skills, that will enable them to progress to University or to apprenticeships and the world of work. Students could continue studying Law or Law related courses at University such as Criminology, International Relations, Public Services Management and Business.

### WHERE NEXT cont.

They also have the choice to use their work based skills to seek employment in the legal or business world or as apprentices. Legal apprentices train on the job at law firms to eventually become solicitors, chartered legal executives or paralegals. Students may also choose to apply for related apprenticeship vacancies in broader sectors of the economy. Jobs directly related to Law could include Barrister's Clerk, Chartered

Legal Executive, Company Secretary, Licenced Conveyancer and Paralegal. Possible future careers where Law qualifications could be useful are Advice Worker, Chartered Accountant, Civil Service Administrator, Human Resources and Data Analyst. Useful websites to research careers and wider progression options could include The Lawyer Portal, Law Careers.net, The Law Society, All About Careers and The Apprenticeship Guide.





# LAW: BTEC LEVEL 3 (SINGLE)

## MINIMUM ENTRY REQUIREMENTS

C/4 in English Language or Literature GCSE. To see overall entry requirements to study at BHASVIC refer to page 136.

## WHAT WILL I STUDY

The BTEC Applied Law course is an enjoyable but challenging way of learning about how our English Legal System works. You will take a practical approach to learning about how laws are made and the structure of the court system. In the first year, you will learn the basics of criminal liability and the tort of negligence and will apply this knowledge to situations involving fictitious clients. In the second year you will build on this knowledge and study criminal law and the law of tort in more depth, including the law on homicide and police procedure. You will develop key skills in legal research and communication, whilst also developing the independent learning skills needed for University study and future employment. This course will give you the equivalent of one A level over two years of study and is 40% coursework based.

## IS THIS COURSE RIGHT FOR ME

Do you know your rights? Are you interested in a career in Law, or studying Law or a Law-related course at University? The Applied Law BTEC is a unique qualification in the legal sector. It provides an excellent introduction to law and gives you an edge when progressing to Higher Education and employment.

## WHERE NEXT

Studying Law BTEC gives students many transferable skills such as problem solving, critical analysis and negotiation skills, that will enable them to progress to University, apprenticeships and the world of work. Students could continue studying Law or a related course at University such as Criminology, International Relations, Public Services Management and Business. They also have the choice to use their work-based skills to seek employment in the legal or business world. For example, legal apprentices train on the job at law firms to eventually become solicitors, chartered legal executives or paralegals. Students may also choose to apply for related apprenticeship vacancies in broader sectors of the economy. Jobs directly related to Law could include Barrister's Clerk, Chartered Legal Executive, Company Secretary, Licenced Conveyancer and Paralegal. Possible future careers where Law qualifications could be useful are Advice Worker, Chartered Accountant, Civil Service Administrator, Human Resources and Data Analyst. Useful websites to research careers and wider progression options could include The Lawyer Portal, Law Careers.net, The Law Society, All About Careers and The Apprenticeship Guide.







# MATHS: A LEVEL (DOUBLE)

## MINIMUM ENTRY REQUIREMENTS

A/7 in Maths GCSE and C/4 in English Language or Literature. To see overall entry requirements to study at BHASVIC refer to page 136.

## WHAT WILL I STUDY

In the first year you will complete and sit your regular Maths A level, whilst studying Further Pure 1 alongside it. You will be exposed to new areas of Maths such as Complex Numbers, Matrices, and Simple Loci Problems. In your second year, you will complete your Further Maths A level, comprised of Further Pure Core (50%), and a choice of either Further Pure 1 (FP1) with Further Mechanics 1 (FM1), or Further Statistics 1 (FS1) with Decision Maths 1 (D1). Your choice of option may depend on what you wish to study at University, and this decision does not need to be made until the end of the first year. You will need to be resilient, and enjoy getting stuck and overcoming problems. Many classes make their own Facebook group so they can post problems to each other and help each other along. There are Teacher-led Subject Extensions daily, Drop ins with the Doubles (A2 students), and a vast array of teacher websites and video networks covering all content for support.

## IS THIS COURSE RIGHT FOR ME

This is a course for students who love Maths and want to dedicate a great deal of their time at BHASVIC to Maths classes. You will spend at least 9 hours per week on independent study, culminating in the submission of an assignment each week. You will sit a 1.5 hour tracking test every half term, completing your A level Maths exams in your first year, and your A level Further Maths exams in your second year. Do not enter this course lightly, as it is very intense, especially at the beginning where students are not used to such a fast pace, and such a high workload outside of class. You will need to have strong GCSE algebra skills when you arrive here, as the jump from GCSE to A level can feel quite vast at first. All students find this course challenging at some point, but the difference between a successful and an unsuccessful student is how they respond to that challenge. That said, if you love Maths, this course will transform you completely by the end of the two years into a very competent mathematician.

## WHERE NEXT

Studying Mathematics helps students develop logical thinking, problem-solving and decision-making skills that are valued by both universities and employers across many job sectors. Mathematics is part of the STEM subjects (Science, Technology, Engineering and Maths) where there is a current skills shortage for employers. Skills from these disciplines are in demand in the job market and have good long term career prospects. There are jobs available relating to diverse interests and they span a wide variety of sectors including entertainment, health, transport, sport, finance, space, energy, agriculture and construction. Jobs directly related to the subject could include Actuarial Analyst, Chartered Accountant, Data Scientist, Investment Analyst, Teacher and

Statistician. Careers where Maths can be useful include Financial Manager, Insurance Underwriter, Meteorologist and Quantity Surveyor. Studying Maths and Further Maths A level will be excellent preparation to study Maths or a related discipline at University. Apprenticeships requiring highly numerate individuals will also hold this A level subject in high regard. Useful websites to research careers and wider progression options could include Future Morph, Where Can STEM take you?, Maths Careers, All About Careers and The Apprenticeship Guide. Please Note: If you want to apply for the top universities in Physics, Maths, Engineering, then Double Maths is essential. STEP & STRETCH classes are also available to help you prepare for top University entry exams if needed.





# MATHS: A LEVEL (SINGLE)

## MINIMUM ENTRY REQUIREMENTS

B/6 in Maths GCSE and C/4 in English Language or Literature GCSE. To see overall entry requirements to study at BHASVIC refer to page 136.

## WHAT WILL I STUDY

This is a two year course, and all assessment is via three 2 hour exam papers taken at the end of the two years - P1, P2 and the Applied paper which is 50% Statistics and 50% Mechanics. Having the drive to access the support on offer at BHASVIC is essential to success. This support can be found in class or course Facebook groups, lunch time Teacher Subject Extensions daily, and drop-ins with Doubles students. There is also a vast array of teacher websites and video networks covering all content. Students will need to be resilient, enjoy getting stuck and overcoming problems.

## WHERE NEXT

Many students continue with their Maths studies after leaving BHASVIC. University departments in the following subjects prefer students to have A level Maths if possible: Physics, Psychology, Economics, Computing, and Business Studies.

## IS THIS COURSE RIGHT FOR ME

This course is demanding and will feel like a big step up from GCSE at first. But if you enjoy working hard and tackling a difficult problem, then this is the course for you. BHASVIC Maths will stretch and challenge all of its learners, and provides plenty of support along the way. Students will spend at least 4.5 hours per week on independent study, culminating in the submission of an assignment each week. Students sit a 1.5 hour tracking test every half term, with a progression exam at the end of their first year. Having strong GCSE algebra skills will really help when starting this course, but with hard work and perseverance, any student can succeed. All students find this course challenging at some point, but the difference between a successful and unsuccessful student is how they respond to that challenge.







# MATHS: GCSE

## MINIMUM ENTRY REQUIREMENTS

D/3 or below in Maths GCSE. To see overall entry requirements to study at BHASVIC refer to page 136.

## WHAT WILL I STUDY

This subject will be an opportunity to re-take your GCSE Maths if you didn't get a grade C/4 first time. At BHASVIC we have an excellent track record working with students to achieve this important qualification. We offer a fresh start, in a new, more mature environment than school, where we will support you in getting to where you need to be. The subject will teach everything at Foundation level where the maximum grade achievable is a C/5.

## IS THIS COURSE RIGHT FOR ME

Though all students who don't have a grade C/4 at Maths GCSE are required to take this subject, you will have the full support of the BHASVIC Maths department behind you. Lessons will be engaging, and will focus on getting you to where you need to be to succeed. You may even decide that you want to aim higher and strive for a C/5 (or higher!), in which case we will be with you every step of the way.

## WHERE NEXT

C/4 in Maths is a minimum requirement for most jobs and Higher Education courses.





# MEDIA STUDIES: A LEVEL

## MINIMUM ENTRY REQUIREMENTS

C/4 in English Language GCSE. C in Media Studies GCSE, if taken. To see overall entry requirements to study at BHASVIC refer to page 136.

## WHAT WILL I STUDY

The course is a combination of theory, research and practical application, needing good written and communication skills. At A level you will undertake critical analysis of a range of different media forms including television, advertising, print media and online media; applying a variety of theoretical approaches, along with an understanding of media language investigating how texts position audiences to respond in particular ways. Additionally you will carry out an individual practical production, for example a music video which is heavily weighted in terms of theory and analysis. Practical work is worth 30% of the final grade; and there are two written examinations.

## IS THIS COURSE RIGHT FOR ME

You will develop excellent critical thinking skills and a detailed understanding of how the media works, focusing on media language, representation, audience and industry. The course is best suited to students with the ability to think critically, work independently and who enjoy written analysis of media texts. You need to be a creative individual with a strong work ethic. If you are curious about the world around you and keen to become part of the organisations which shape our views of the world, then this is the right course for you. Goes with any theory-based, essay subject such as Film Studies, English, Digital Creative Media, IT, Computer Science etc.

## WHERE NEXT

Studying Media A level gives students a variety of future career directions and transferable skills for their next steps. Critical thinking, along with analytical and practical skills are highly regarded and beneficial in many different professional and higher education contexts. The Creative Industries is a thriving, vital part of the UK's economy and students can begin a career in this sector through further study in related disciplines at University or through direct entry to apprenticeships or working in the media industries. Jobs directly related to Media could include Media Planner, Multimedia Specialist, Programme Researcher, TV Production Assistant, Public Relations Officer, Runner and Social Media Manager. Other jobs where Media could be useful are Advertising Account Executive, Broadcast Journalist, Editorial Assistant, Event Manager or Market Researcher. Useful websites to research careers and wider progression options could include Creative Skillset, Hive, All About Careers and the Apprenticeship Guide.







# MUSIC: A LEVEL

## MINIMUM ENTRY REQUIREMENTS

B/6 in Music GCSE if taken or Grade 5 instrument and C/4 in English Language GCSE. If you believe you are grade 5 or above on your instrument, but have not taken a formal exam, you will need to come to a theoretical and practical assessment with the music teachers at BHASVIC in Feb/March. Students who do not have Grade 5 theory upon entry will take this exam during the first year of the course. To see overall entry requirements to study at BHASVIC refer to page 136.

## WHAT WILL I STUDY

Studying Music A level will develop your skills in solo and ensemble performance, composition and musical analysis; improving your practical and theoretical musical skills. You will perform as a soloist and as part of an ensemble every half term, developing your skills and confidence as a performer in preparation for your examined performance during the final Spring term. You will learn to compose for different combinations of instruments and voices in a wide variety of styles. You will study a wide range of music: looking at the immense musical and social changes during the 18th and 19th century and their impact on the symphony and studying twentieth century music, which so challenged audiences at the time that it sometimes caused riots! You will also look at the many exciting developments in jazz music. Studying a diverse range of music in depth will improve your aural and analytical skills and prepare you for the written exam. All music students will also benefit from participating in BHASVIC's instrumental and vocal ensembles and concerts and will take part in projects with visiting professional musicians.

## IS THIS COURSE RIGHT FOR ME

This exciting and challenging course requires strong performance skills, creativity and academic ability. It suits people who are good performers on their instrument or voice, enjoy composing and are open-minded in their approach to listening to and analysing a diverse range of music. Studying A level Music gives you the power to engage with and appreciate music more deeply and will greatly develop your skills as a musician.

## WHERE NEXT

Music A level involves a lot of practical, creative work but it is sufficiently rigorous to be accepted as a serious academic subject for entry to most University courses. The course enables development of a wide range of practical and academic skills which also benefit students going on to careers not directly related to music. Possible careers in music include Performing, Composing/Arranging, Education, Music Therapy, Music Administration and Management, Music Production, Music Journalism and the wider creative industries.



## STUDENT PROFILE

**Rosie****PREVIOUS SCHOOL:**

Chailey School

**STUDYING A LEVELS IN:**

Music, Philosophy and  
English Language and  
Literature

Studying Music at BHASVIC has helped me excel in performance and gain a new appreciation of the theory and History of Music, I am proud of the new abilities I have developed in using music software to create

my own tracks and scores. Next, I have decided to study Commercial Music at University, I am ambitious to have a career in the music industry and to use music to equip and inspire others.



# MUSIC: BTEC LEVEL 3 (SINGLE)

## MINIMUM ENTRY REQUIREMENTS

C/4 in GCSE Music or BTEC Level 2 Merit and Grade 5 standard or above on main instrument desirable but not essential. Suitability for the course will be by audition in which you will be required to perform a 2 - 3 minute piece on your principal study and undertake short improvisation and general musicianship tests. To see overall entry requirements to study at BHASVIC refer to page 136.

## WHAT WILL I STUDY

The course focuses on performance in both ensemble and solo settings, general musicianship as well as researching and investigating professional practice in the pop music industry and the range of opportunities for solo performance. You will be expected to respond to set performance briefs alongside developing your knowledge of the fundamental rudiments of musical language. The course comprises of 4 units which are: Ensemble Music Performance; Practical Music: Theory and Harmony; Professional Practice in the Music Industry; Solo Performance. Although there is no requirement to have Grade 5 Theory you will have to learn about music theory on the course – it's not entirely practical!

## IS THIS COURSE RIGHT FOR ME

Studying BTEC Level 3 Music gives you the opportunity to formalise and deepen your knowledge, experience and understanding of the contemporary music industry. You will analyse performance practice and incorporate current trends into your own music making in both solo and ensemble settings as well as strengthening your knowledge of the rudiments of music. This knowledge will then be put into practical use in vocational contexts to deepen your awareness of relationships within the organisations found in today's ever evolving music industry. Although the course is largely practical, and mostly focused on performance of contemporary music, two units have externally assessed written exams.

## WHERE NEXT

Performing, Composing, Music Production, Music/Event Management, Music Broadcasting/Journalism and the wider creative industries. The rigour of the course will provide the learner with the relevant qualification base to study at University or music conservatoire.



## STUDENT PROFILE

# Joey

### PREVIOUS SCHOOL:

Chailey School

### STUDYING A LEVELS IN:

Music, Maths and Physics

Studying Music, Maths and Physics at BHASVIC has enabled me to gain a place on the Tonmeister (Music and Sound recording) course at the University of Surrey.

The music department at BHASVIC is like a big family and the high level of support has guided me through an exciting and challenging course.



# MUSIC THEORY

## MINIMUM ENTRY REQUIREMENTS

Grade 5 theory is a requirement for completing A level Music. Students who do not have Grade 5 theory upon entry will take this exam during the first year of the course. To see overall entry requirements to study at BHASVIC refer to page 136.

## WHAT WILL I STUDY

Grade 5 Theory is recognised as a landmark musical achievement and is equivalent in standard to GCSE Music. A pass in Grade 5 Theory is also a prerequisite for any student who wishes to take an ABRSM practical exam beyond Grade 5. The knowledge and skills acquired in Grade 5 theory will greatly improve your ability in musical analysis and composition.

## IS THIS COURSE RIGHT FOR ME

For students who already have Grade 5 Theory, instruction is also given in Grades 6-8 Theory.

## WHERE NEXT

Grades 6 and above carry UCAS points. The upper levels of Theory are recognised as excellent training for any student wishing to study Music or Music Technology in Higher Education.





# PERFORMING ARTS BTEC LEVEL 3: ACTING (SINGLE)

## MINIMUM ENTRY REQUIREMENTS

C/4 in English Language GCSE. You must also have a proven interest in performing, perhaps as a member of drama group / organisation or involved in drama at school. To see overall entry requirements to study at BHASVIC refer to page 136.

## WHAT WILL I STUDY

If you are excited about the world of theatre and are dedicated to acting, then you will enjoy this course. There is a strong emphasis on practical acting methods and opportunities to develop skills in creativity and performance. You will explore existing practitioners as well as developing your own technique through group pieces and live performance. You will be required to undertake a lot of independent research into what it takes to be an actor.

## IS THIS COURSE RIGHT FOR ME

You will need to have confidence in yourself as an actor and have an ability to participate in a range of practical acting workshops to develop skills and acting techniques. You will have to carry out a lot of independent research throughout the two years. The course goes well with any creative or Humanities subjects.

## WHERE NEXT

This course provides skills applicable to developing a career in the performing arts industry. You will also be able to progress on to a degree level course in Performing Arts or related fields. Many of the skills are transferable and can be applied to higher level study in many fields or in the world of work.





**I am able to develop  
my acting techniques  
on the course.**

**Hannah, Performing Arts**  
Formerly of Longhill



# PHILOSOPHY: A LEVEL

## MINIMUM ENTRY REQUIREMENTS

B/6 in English Language or Literature GCSE. To see overall entry requirements to study at BHASVIC refer to page 136.

## WHAT WILL I STUDY

In Philosophy, you will encounter the work of some of the greatest thinkers in the western tradition. The Greeks invented western philosophy but the tradition begun with Socrates, Plato and Aristotle has continued uninterrupted up until the present day. You will study aspects of the work of philosophers like John Locke, David Hume, Rene Descartes and Bertrand Russell during the first year of your course in epistemology (the theory of knowledge) and ethics. You will be expected to develop a critical and evaluative approach to their arguments and you will learn how to construct and develop your own responses to them.

## IS THIS COURSE RIGHT FOR ME

Philosophy is a stimulating subject, but a demanding one. You must be prepared to read, think and write about ideas and concepts which can be difficult to understand but you will learn to identify strengths as well as weaknesses in many standard arguments of the philosophical tradition. In addition, you will develop the skill of constructing your own arguments in response to the arguments of others and you will be expected to develop your own point of view in relation to a range of philosophical questions.

## WHERE NEXT

Philosophy students tend to have an inquisitive nature, and are willing to question just about anything and everything. Philosophy is a subject that has a very wide application in future careers. Due to its concentration on thinking about difficult ideas and challenging concepts, you will be able to use these transferable skills in a wide range of progression contexts. These include: logical and analytical thinking and reasoning, problem solving, written and oral communication, able to interpret, condense and clarify information, able to formulate your own opinions and defend them in debate and the ability to interpret and analyse a variety of different information. Industry sectors where a Philosophy qualification may be considered an advantage are: Journalism, Law, Social Services, Business, Education, IT and The Civil Service. Useful websites to research careers and wider progression options could include Prospects, All About Careers and The Apprenticeship Guide.





# PHOTOGRAPHY: A LEVEL

## MINIMUM ENTRY REQUIREMENTS

No specific course entry requirements. To see overall entry requirements to study at BHASVIC refer to page 136. A charge for materials applies to Photography, bursaries and payment plans are available.

## WHAT WILL I STUDY

Our grade one outstanding course focuses on learning photographic processes that give you the skills to create individual, expressive work. This covers black and white photography which is darkroom based and colour photography using digital techniques using PCs, Photoshop CS6 software, laser/inkjet printers, lenses, lighting kits and studio techniques.

## IS THIS COURSE RIGHT FOR ME

Are you ambitious, motivated & creative? This course is a practical making/creating course which uses a vast range of specialist materials and art techniques. Our Practical Portfolio coursework is supported by a 3000 word contextual/personal study essay and Exam Unit. Learning to use traditional and digital SLR cameras helps you develop technical skills alongside creative and expressive ways of working preparing you for further study and employment in the photographic creative industries. A charge of £180 applies to contribute towards the cost of materials used during the two years of this course, bursaries and payment plans are available. You are given a generous allocation of colour printer credits per component of work and once you have used them up you top them up at your own expense.

## WHERE NEXT

Studying Photography will enhance your creative, social and cultural understanding as well as develop your specialist technical knowledge. Students will undertake work to complete a portfolio on an ongoing basis with support from our experienced staff. Progression from this course can be directly to University, employment or to a Photography Foundation course. We have a supportive and structured Visual Arts career progression programme to help you with your next steps. Students progress to careers in the creative industries such as Fashion, Medical Illustration, Photography, Photo Journalism, Commercial Photography, p Photo Editing, Film/Animation, Television, Media and Advertising. Useful websites to research careers and wider progression options could include Creative Skillset, Prospects, All About Careers and The Apprenticeship Guide





**Studying Photography at  
BHASVIC is a great chance  
to develop an existing  
interest in photography,  
exploring experimental  
processes in a challenging  
yet fun environment.**

Mohamed, Photography



# PHYSICS: A LEVEL

## MINIMUM ENTRY REQUIREMENTS

B/6 in Maths GCSE and 2 B/6s in 2 Sciences at GCSE including Physics or Additional Science (not Applied Science). To see overall entry requirements to study at BHASVIC refer to page 136.

## WHAT WILL I STUDY

You will study forces, motion, electrons, waves and photons in the first year. Throughout this subject and especially in the second year you will apply your knowledge to astrophysics, motion and electromagnetism. You will learn how to use physical quantities and units, scalars and vectors. Practical work is an important aspect, and students generally do one a week (no separate coursework component); students keep a lab book to evidence their skills. Goes well with Maths, Chemistry, Biology, Computing in particular.

## IS THIS COURSE RIGHT FOR ME

Successful physics students enjoy maths and particularly algebra. They are curious about how things work and thrive on the challenges of problem solving. They work effectively both on their own and in groups. They work carefully and with precision in both their practical and written work. Students will succeed most if they are self-motivated independent learners. Flipped learning is used for all topics, lessons are interactive and build upon independent study. There are lots of opportunities to get help and support from the department. Mathematical fluency is vital for success at A level. We run an 'in-house' Maths for Physics course for students who do not do A level Maths but this does not lead to a qualification. If you want to study Physics at University you must study Maths A level as well.

## WHERE NEXT

A Physics A level is a great starting point for a career in scientific research, as well as in a range of careers in business, finance, IT, astrophysics, geophysics, materials science, forensic science, medical science (e.g. Medical Physicist) and engineering. Physics will help you to build up your problem solving, research, and analytical skills. With these skills you will be able to test out new ideas plus question and investigate other peoples' theories, which is useful for any kind of job that involves research or debate. Job roles where Physics is useful would include: Metallurgist, Nanotechnologist, Radiation Protection Practitioner, Teacher. Jobs where your degree would be useful include: Investment Analyst, Meteorologist, Nuclear Engineer, Operational Researcher, Patent Attorney, PPC Specialist and Systems Developer. Useful websites include the Institute of Physics, Physics.org, All About Careers and The Apprenticeship Guide.





# POLITICS: A LEVEL

## MINIMUM ENTRY REQUIREMENTS

C/4 in English Language GCSE. To see overall entry requirements to study at BHASVIC refer to page 136.

## WHAT WILL I STUDY

Politics is an important, interesting and ever-changing course - it gives you the opportunity to debate the political issues of the day, encourages you to understand how political systems work and appreciate why politics matters. The introduction to British politics covers the framework of our political system including the nature of the Constitution, how Parliament works, and the role of the Executive. You will then get to investigate your role in the political process by looking at elections and voting behaviour, understanding more about the main political parties and considering what else influences political decisions. In addition, you will also study the core political ideas of conservatism, socialism and liberalism. In your second year you will study an additional ideology before undertaking an in-depth study of either Politics of the USA, which includes the US Constitution, the three branches of government (executive, legislature and judiciary), elections, and civil rights or Global Politics, including theories of global politics, sovereignty and globalisation, global governance, human rights, regionalism and the European Union.

## IS THIS COURSE RIGHT FOR ME

If you have an interest in current affairs and enjoy debate and discussion, this subject is for you. Everyone is affected by politics and the actions of politicians, therefore studying and talking about politics are a necessary part of the life that we lead. You must enjoy reading about current affairs and watching programmes such as Question Time and the Daily Politics show, and you must be interested in how and why decisions are made by politicians in a democratic system.



## WHERE NEXT

From social and political research to journalism, marketing and HR, a qualification in politics opens up a variety of career opportunities as well as developing a broad range of skills. You will acquire a good understanding of politics on a local and national level. You will gain a number of transferable skills, including being able to debate and examine issues from all standpoints, an ability to identify, analyse and find solutions to problems and to make reasoned arguments as well as gain excellent communication skills. Jobs directly related to politics could include: Civil Service, Government social research officer, Politician's assistant, Public affairs consultant, Social researcher. Jobs where this subject would be useful include: Charity officer, Forensic accountant, Human resources officer, Local government officer, Market researcher and Journalist. Useful websites might include Targetjobs, Prospects and All About Careers.





# PSYCHOLOGY: A LEVEL

## MINIMUM ENTRY REQUIREMENTS

C/4 in Maths GCSE and C/4 in English Language or Literature GCSE. To see overall entry requirements to study at BHASVIC refer to page 136.

## WHAT WILL I STUDY

Topics include conformity, obedience, resisting obedience, influences on social change, memory and why we forget, eye-witness testimony, development of attachments, maternal deprivation, orphan studies, definitions of abnormality, the causes and treatments of mental disorders: phobias; depression; OCD; schizophrenia, origins of psychology, approaches to psychology, the nervous system, neurons and synaptic transmission, brain localization, biological rhythms, the endocrine system, gender identity, forensic (criminal) psychology.

## IS THIS COURSE RIGHT FOR ME

Students must be interested in people, why people do things, say things and think things. Students must have an open mind, and be able to change their opinions in light of scientific evidence. Students must be really keen to develop their evaluative skills, using self-reflection and peer work. Students must realise that psychology is a rigorous scientific discipline and will be expected to work hard. Students will be supported in and out of lessons through challenging concepts, and will be expected to work independently and collaboratively throughout an ultimately rewarding two years. You will need good Maths and English skills.

## WHERE NEXT

Psychology is useful for any job that requires lots of interaction or an understanding of human behaviour and development. As a science, Psychology is a thriving academic discipline dedicated to the study of human behaviour and the connected thoughts, feelings, and motivations behind it. People with skills in Psychology are sought after in business, management, sport, teaching, research, social work and careers in counselling and healthcare. Skills that you will develop from studying Psychology will include analytical and organisational skills and learning about scientific research methods and collecting and working with data. Learning about human behaviour can also help to build your communication, teamwork and leadership skills. Jobs directly related to your degree could include: Psychologist (various specialisms), Teacher, Mental Health and Wellbeing Practitioner. Jobs where your degree would be useful include: Advice Worker, Human Resources Officer, Market Researcher and Play Therapist. Useful websites include British Psychological Society, Prospects, All About Careers and The Apprenticeship Guide.

## STUDENT PROFILE

# Laura

**PREVIOUS SCHOOL:**

Varndean School

**STUDYING A LEVELS IN:**

Maths, Economics and Psychology

I am studying Maths, Economics and Psychology A levels plus a Portfolio course in International Development which has really widened my interests and helped when writing my Personal Statement for University

applications. Next year I plan to go to Durham University to do an Economics degree. The support at BHASVIC has been excellent with Study Support and my Personal Tutor offering help throughout my time at BHASVIC.



# SOCIOLOGY: A LEVEL

## MINIMUM ENTRY REQUIREMENTS

C/4 in English Language or Literature GCSE. To see overall entry requirements to study at BHASVIC refer to page 136.

## WHAT WILL I STUDY

Sociology explores society and the interaction between institutions and individuals. You will study research in areas such as culture, socialisation, youth subcultures, globalisation and the digital world, crime and deviance and social inequality. Students will explore how sociologists use a range of research methods to gather data. Exciting areas of the syllabus are studying digital social media (Year 1) and crime and deviance (Year 2).

## IS THIS COURSE RIGHT FOR ME

Do you analyse people and their behaviour? Do you like to see two sides of an argument? Are you interested in why men are more criminal than women? Why are some people so rich and others so poor? If so then Sociology may be the subject for you. Sociology is an independent reading and essay based subject. Students will take active part in discussing ideas with their peers and as a whole class on a regular basis. We do flipped learning so students prepare for lessons at home and we establish what students know, then analyse and evaluate ideas. Complementary subjects are Psychology, Health and Social Care, History, English and Geography. Students take 3 exams at the end of the second year, there is no coursework.

## WHERE NEXT

Studying Sociology involves analysis of matters of concern in society and related concepts and theories. Sociology courses include methods of social research, as well as opportunities to gain skills in other areas including: the ability to think and act creatively and maintain a flexible mind, participate in discussions, develop opinions, propose ideas and theories and base conclusions on statistical research. Students could continue their studies at degree level or consider a range of apprenticeships or jobs where they can apply the skills that have developed from the qualification. Possible future careers could include: Advice worker, Further education teacher, International aid/development worker, Social researcher and Social worker. Jobs where sociology could be useful could include: Actuarial Analyst, Charity Fundraiser, Human Resources Officer, Probation Officer and Public Relations Officer. Useful websites include the British Sociological Society, All About Careers, Prospects, and The Apprenticeship Guide.







# SPANISH: A LEVEL

## MINIMUM ENTRY REQUIREMENTS

B/6 in Spanish GCSE and C/4 in English Language GCSE. To see overall entry requirements to study at BHASVIC refer to page 136.

## WHAT WILL I STUDY

You will learn to communicate fluently in the language both orally and in writing. You will read and listen to authentic material in order to develop your comprehension skills and your knowledge of the culture. You will study topics relevant to the country/countries where the language is spoken.

## IS THIS COURSE RIGHT FOR ME

Did you enjoy the language at GCSE? Do you want to become fluent and develop your linguistic and cultural knowledge? Good linguists are risk takers and naturally inquisitive. At this level you need to be rigorous in your learning and very accurate in your application of knowledge. This course will give you an insight into cultural and political issues in the Hispanic World.

## WHERE NEXT

Language learning is inextricably bound up with history, culture, business and economics. There are well attested advantages of speaking more than one language. Linguists are increasingly in demand in many sectors of industry. You may consider a degree purely in Languages / Linguistics / European Studies, leading to a wide variety of careers including, but not limited to, translation, interpreting, teaching, publishing, journalism and marketing. A language can also be combined with most subjects at higher education level, for example law, international relations, politics, media, business or sciences. Awareness of a foreign language is also an asset when applying for apprenticeships. Jobs where this is particularly useful are Cabin Crew, Travel Services, Customer Service and Relations, Events Assistants and Public Services. Useful websites to research careers and wider progression options could include Planit plus, All About Careers and The Apprenticeship Guide.

# LANGUAGE CENTRE

PAGE | 125





# PHYSICAL EDUCATION: A LEVEL

## MINIMUM ENTRY REQUIREMENTS

C/4 in Science GCSE, C/4 in English Language GCSE and B/6 in Physical Education GCSE. Club-level standard practical performance within one selected sporting activity. To see overall entry requirements to study at BHASVIC refer to page 136.

## WHAT WILL I STUDY

Areas studied are applied anatomy and physiology, exercise physiology, biomechanics, skill acquisition, sports psychology, sport and society and contemporary issues in physical activity and sport. This course will be assessed via one exam assessment at the end of the second year to cover all of the modules taught. Practically you will also be assessed in one sporting activity, alongside an oral analysis of sporting activity performance.

## IS THIS COURSE RIGHT FOR ME

To study this subject you need to be a keen sportsperson who has an interest in the theoretical content of sport as the subject covers a wide range of these concepts.

## WHERE NEXT

Physical Education (PE) isn't just about sports, it is about developing a knowledge of the impact sport can have on health, well-being and the human body. Whilst studying a Physical Education A level you will learn a range of skills that will help you in your future career, for example, teamwork, resilience, competitive spirit, social, communication and analytical skills. Physical Education lends itself to a range of careers in sports and fitness as well as other industries, for example, nutrition, physiotherapy and chiropractic practice. Some careers that you could consider doing with PE include: Sports Scientist, PE Teacher, Physiotherapist, Professional Sportsperson, Sports Coach/Consultant, Sports Policy Adviser at local and national level, Diet and Fitness Instructor and Personal Trainer. Useful sites include Careers in Sport, Prospects, BASES, All About Careers and The Apprenticeship Guide.







# SPORT: BTEC LEVEL 3 (SINGLE/DOUBLE)

## MINIMUM ENTRY REQUIREMENTS

C/4 in English Language GCSE or C/4 in English Literature GCSE or C/4 in Maths GCSE. To see overall entry requirements to study at BHASVIC refer to page 136.

## WHAT WILL I STUDY

The subject includes the fundamental sport topics such as coaching, fitness testing, practical sports, outdoor education and physiology to name a few. These topics allow you to access a wide range of studies skills and interests within the subject, which has a practical bias.

## IS THIS COURSE RIGHT FOR ME

This is a two year subject which will give you the equivalent of one A level over this time. It is portfolio based and has continual assessment throughout. You will visit University and colleges to experience specialised sports equipment.

## WHERE NEXT

Our students move on to study sport or coaching at higher education. You will gain the skills to pursue careers in sport such as sports coaching, teaching or other related leisure industry employment.





# SPORT AND EXERCISE SCIENCES: BTEC LEVEL 3 (SINGLE/DOUBLE/TRIPLE)

## MINIMUM ENTRY REQUIREMENTS

C/4 in English Language GCSE and Maths GCSE; and C/4 in Science GCSE. To see overall entry requirements to study at BHASVIC refer to page 136.

## WHAT WILL I STUDY

The academic and vocational application of understanding and knowledge in topics such as sport psychology, biomechanics, physiology, training and essential research methods and data analysis. Learning is partly through University laboratory visits and vocational specialist guest speakers.

## IS THIS COURSE RIGHT FOR ME

These are academically demanding and applied courses suiting analytical students with a strong science understanding. You must be a committed and independent learner with the personal management skills to meet ongoing coursework deadlines. Learning and assessment is varied to parallel workplace and University style demands, with some external examination and coursework assessment. You will receive excellent staff support for achieving excellent results, while enriching your study skills and personal development.

## WHERE NEXT

Sport Science is the ninth most popular University route from BHASVIC, providing credible progression to both University degrees and the workplace. Some careers include: teaching, physiotherapy or sports therapy, coaching, journalism and research. Transferable and highly valued skills also allow for non-subject based study and employment.



## STUDENT PROFILE

## Harry

**PREVIOUS SCHOOL:**

St Paul's Catholic School

**STUDYING AT BHASVIC:**

Sport and Exercise Science  
Extended Diploma

The BTEC Extended Diploma (triple) in Sport and Exercise Sciences gave Harry the personal management skills to meet ongoing coursework deadlines and the breadth of the academic, science-based units, preparing him well for the demands of his university course. Celebrating the formal signing of his contract to attend Marquette University

in the USA from September, he is a rising star in the high jump world having recently cleared 2.06m he is currently ranked 21st nationally and fifth at under 20 level. Harry's ambition at Marquette University is: "to work hard... If America goes well, then I will push for the Commonwealth Games in 2022"





# SPORTS PERFORMANCE:

**MEN'S BASKETBALL / WOMEN'S FOOTBALL / RUGBY /  
MEN'S FOOTBALL / WOMEN'S BASKETBALL / NETBALL**

## MINIMUM ENTRY REQUIREMENTS

A level programme requirement. You do not need to be taking a sports course to be a part of the sports performance programme. To see overall entry requirements to study at BHASVIC refer to page 136.

## IS THIS COURSE RIGHT FOR ME

If you're a committed individual who's aim is to play regularly and to progress in sport, then Sports Performance will benefit you during your time at BHASVIC. Throughout the duration of the course, your qualified coach will provide you with the opportunity to compete at Regional and National levels whilst also ensuring that you are able to thrive academically. Choosing Sports Performance enables you to develop your knowledge and enhance your skills as a sports person by training regularly and playing competitive games in your chosen sport, alongside your college course.

## WHAT WILL I STUDY

This course is a practically based subject in which all aspects of your own performance will aim to be enhanced. During sessions you will work on the technical and tactical elements of your sport, with Strength and Conditioning sessions included to ensure you are able to reach your maximum potential as a BHASVIC athlete.

## WHERE NEXT

BHASVIC Sport gives you the tools to progress in sport in the direction you should choose. Previous high achieving students have been offered University places in the UK and chances to study and play abroad through a Sports Scholarship.





# TEXTILE DESIGN: A LEVEL

## MINIMUM ENTRY REQUIREMENTS

No specific subject entry requirements. To see overall entry requirements to study at BHASVIC refer to page 136. A charge for materials applies to Textile Design, bursaries and payment plans are available.

## WHAT WILL I STUDY

Our grade one outstanding course in Textile Design has the emphasis on the expressive and experimental aspects of the Textiles medium. You study the processes, skills, concepts and ideas associated with textiles, art and design. This subject does not include traditional pattern cutting but does include making concept garments.


## IS THIS COURSE RIGHT FOR ME

Are you ambitious, motivated and creative? Our Practical Portfolio component supported by 3000 word contextual study essay and Exam Unit will challenge you. You will learn block printing, batik, felt making, hand dyeing, weaving, concept garment making, and creative use of the PC using Photoshop to create designs and creative outcomes. Assessment will be by 60% practical portfolio and 40% practical exam. A charge of £180 applies to contribute towards the cost of materials used during the two years of this course, bursaries and payment plans are available. You are given a generous allocation of colour printer credits per component of work and once you have used them up you top them up at your own expense.

## WHERE NEXT

As a Textile Design student, you can use your creative flair and ability to generate ideas and concepts to meet a brief. You will be given the opportunity to develop your ideas in a practical and supportive environment and will work both as part of a team and on independent projects. Students can progress to University, Art Foundation or apprenticeships and may go on to work in a variety of sectors (fashion and textiles design, styling, fashion marketing and business, interior design, textiles, merchandising and fashion communications). Jobs that are directly related to qualifications in Textiles Design could include: Clothing/Textile Technologist, Colour Technologist, Interior and Spatial Designer, Fashion Designer and Textile Designer. Jobs where Textiles Design would be useful could be: Teacher, Printmaker, Product Designer, Retail Buyer, Stylist and Visual Merchandiser. Useful websites could include Drapers, Creative Skillset, Creative Choices, All About Careers and The Apprenticeship Guide.





**“Visual Arts at BHASVIC  
has helped me improve  
my work and develop my  
creative ideas.”**

**Lily, Textiles & Graphics**

# Entry Requirements

Typical BHASVIC programmes: Level 3

## 3 A LEVELS

Six GCSEs, with a minimum of five grade C/4 and one grade B/6. These must be in a minimum of five different subjects. This must include a minimum of grade C/4 in English Language GCSE or Maths GCSE. This programme of study is made up of three single blocks of Level 3 study (for example, two A levels and a single BTEC, three A levels, etc). We will discuss with you at interview and enrolment whether three A levels or two A levels and a single BTEC is most suitable for you, depending on your GCSE grades.

## 4 A LEVELS

A minimum of four A\*/8 grades and three A/7 grades in seven different GCSEs, including a minimum of grade B/6 in Maths GCSE and English Language GCSE. This programme of study is made up of four single blocks of Level 3 study and is normally four A levels. We will discuss this in detail with you at interview and enrolment, including options to study an Extended Project. Double Maths: Students studying Double Maths A level may wish to take two additional A level courses alongside their Maths, to enable them to acquire three different subjects. We will discuss this with applicants individually at interview but as a guideline, we would advise having a minimum of four A/7 grades and three B/6 grades at GCSE to study Double Maths and two other A levels.

## VOCATIONAL LEVEL 3 (ALL A LEVEL EQUIVALENTS)

Five GCSEs at grade C/4 or above in five different subjects. This must include a minimum of grade C/4 in English Language GCSE or Maths GCSE. This programme of study is made up of three single blocks of Level 3 study, at least two of which will be a BTEC qualification (for example, an A level and a double BTEC, two single BTECs and an A level, a triple BTEC, etc). All Level 3 qualifications are A level equivalent at BHASVIC. BTEC Subject areas available: Business, Computing, Creative Media Production, Health and Social Care, IT, Law, Music, Performing Arts and Sport. Typical BHASVIC programmes: Level 3 Note: Students who have not already achieved grade C/4 in English and/or Maths GCSE must continue to study for those alongside other courses.

## OTHER POINTS TO NOTE

Students who have not already achieved grade C/4 in English and / or Maths GCSE must continue to study for those alongside other courses.

All A level qualifications are delivered over two years. Some have a coursework element (no more than 20%) with final exams at the end of two years. BTEC qualifications are assessed over time through ongoing assignment work with some externally assessed content.





AS levels are not taken as part of the A level qualification at BHASVIC. If a student does not continue with a course into the second year a small number of AS level and BTEC Certificate courses are available as recovery courses to complete within the second year to ensure a qualification is gained.

Specific GCSE grades are often required for certain courses. These are shown on the relevant prospectus page and may be found on the college's website: [www.bhasvic.ac.uk](http://www.bhasvic.ac.uk)

If you are an EU resident and have not attended an international school you will be required to have an IELTS Academic score of 5.5 in order to take any Level 3 course at BHASVIC.

### **CHARGES AND ASSISTANCE (SEE WEBSITE FOR FURTHER INFORMATION)**

The 16-19 bursary is aimed at providing the most vulnerable young people with a specific level of financial support. The college is able to use its discretion to award monies from the Bursary Fund in ways that best fit the needs and circumstances of individual students. This could include providing help with travel, books or other course related costs. BHASVIC will look to target support to those young people facing the greatest financial barriers to participation e.g., to a student's family who received free school meals, those on a means-tested benefit or who fall into a priority group. Application forms are available from the Student Services Centre.

# Second Year Portfolio Courses

In your second year at BHASVIC you will be able to take an additional course to supplement your learning. Some of these courses do not lead to a qualification, others give you an additional nationally recognised qualification. Portfolio courses are designed and delivered by highly specialised and experienced teachers who know exactly what sixth form students need and wish to learn. The courses help enhance your knowledge and experience to give you the edge in your future plans and applications. The range of courses on offer varies each year; the list below shows a typical selection:

## PORTFOLIO COURSES:

- Advanced Apprenticeship in Sporting Excellence (AASE) Basketball
- BHASVICtv
- British Sign Language
- Creative Writing
- Criminology
- Current Affairs
- Digital Art
- Drama
- Duke of Edinburgh
- Extended Project (see next page)
- Film Club
- Financial Education
- Fitness Instructor
- French for Beginners
- Geographical Information Systems
- Geology
- Graphics
- Historiography
- History of Ideas
- Interactive Media
- IT in the Workplace
- Italian for Beginners
- Journalism Foundation Certificate
- Latin for Beginners
- Life Drawing
- Mathematics GCSE Improvement for University
- Mathematics, Further AS level
- Maths for Chemistry Support
- Maths for Physics Support
- Mindfulness
- Music Theory Grades 5 - 8
- Nutrition & Improving Personal Exercise
- Philosophy & History of Art
- Photography
- Record Production
- Science for Society
- Spanish for Beginners
- Sport Performance (for those playing in Football, Rugby, Netball and Basketball teams)
- Sports Leadership
- Young Enterprise



# Extended Project Qualification

## One of the most popular Portfolio courses is the Extended Project Qualification (EPQ)

### EXTENDED PROJECTS

The Extended Project Qualification (EPQ) is very popular with both students and University Admission Tutors. The EPQ is equivalent to half an A level and it is possible to gain an A\* grade (and many BHASVIC students do!). It is a project based piece of work that allows you to research and write or create in an area that you are interested in.

BHASVIC offers an exciting range of Extended Projects routes and encourages students to create projects themed around their future plans, passions and main interests. To give you a taste of their diversity, the following areas of research have been submitted for projects: 'Should we surrender our DNA at birth?'; 'How music production can change a sample of music'; 'The influence of Scandinavian folk-wear on the British fashion industry'; 'The morality of horse racing'; 'Restricting advertising to children'; 'The necessity of

feminism'; 'Do numbers really exist?'. The project gives you an advantage

in University applications and job interviews because the nature of the course gives you lots to discuss and an ability to illustrate your interests beyond your main course. There are two timetabled sessions a week for the project, with some of these involving whole class teaching of research skills and methodologies or debates around themed topics.

An important aspect of the final assessment for the project is a presentation, so you will be encouraged to build your confidence and skills in presenting. The final project you produce will be assessed by your teacher and moderated externally by the Examination Board. The Extended Project is offered primarily in the second year, but is also available to some first year students – please ask at enrolment if you are interested in this course.



# The BHASVIC Timetable

At college you can divide your time between timetabled lessons, tutorial, private study and socialising. You will have lessons for a minimum of 13.5 hours a week plus tutorial time (and enrichment if you opt for it). Outside of lessons you should spend a further 13 hours on private study and homework across your courses per week. Working for up to eight hours a week in part-time employment is very positive but any more than this is likely to negatively affect your studies and achievement.

	MONDAY	TUESDAY	WEDNESDAY		THURSDAY	FRIDAY		
8.30	A 8.30-10.00	E 8.30-10.00	C 8.30-10.00		F 8.30-10.00	D 8.30-10.00		
8.45								
9.00								
9.15								
9.30								
9.45								
10.00	BREAK	BREAK	BREAK		BREAK	BREAK		
10.15	B 10.15-11.45	F 10.15-11.45	D 10.15-11.45		G 10.15-11.45	C 10.15-11.45		
10.30								
10.45								
11.00								
11.15								
11.30								
11.45	LUNCH 11.45-12.30	LUNCH 11.45-12.30	LUNCH 11.45-12.30		LUNCH 11.45-12.30	LUNCH 11.45-12.30		
12.00								
12.15								
12.30	C 12.30-14.00	G 12.30-14.00	B 12.30-14.00		E 12.30-14.00	F 12.30-14.00		
12.45								
13.00								
13.15								
13.30								
13.45								
14.00	BREAK	BREAK	BREAK		BREAK	BREAK		
14.15	D 14.15-15.45	A 14.15-15.45	E 14.15-15.45		A 14.15-15.45	G 14.15-15.45		
14.30								
14.45								
15.00								
15.15								
15.30								
15.45	Meeting/ Training Slot	5 MINUTE BREAK		Sport/ Enrichment	Meeting/ Training Slot			
16.00		B 15.50-17.20						
16.15								
16.30								
16.45								
17.00								
17.15								
17.30								

Note: The timetable structure is subject to change year on year and the above is for illustrative purposes only.

# Applying to BHASVIC

We welcome applications from students irrespective of their disability, family responsibility, marital status, race, colour, ethnicity, nationality, religion or belief, gender or sexual orientation.

BHASVIC, Brighton MET and Varndean College together form the Accord Colleges in Brighton and Hove. The three colleges have a coordinated application process for students seeking to study at any of the Accord Colleges.

Under the Accord, you will not be able to make an application to both BHASVIC and Varndean College. This is so that these two sixth form colleges can effectively plan curriculum provision to cater for as many students wishing to study in one of these colleges as possible.

You are welcome to make an application to one of these two Sixth Form Colleges and also to Greater Brighton Metropolitan

College (includes Brighton MET and Northbrook MET).

You are also entirely free to apply to any other educational institution – it is only in the case of BHASVIC and Varndean College that you are not able to apply to both colleges. An Accord College is likely to ask you, at interview, about any other applications you have made or offers you hold from other educational institution, employer or training provider.

In the event of oversubscription, we will offer places to students in the order specified in our Admissions Policy which is available from the college and on the BHASVIC website.

If BHASVIC is oversubscribed, we will give priority to students whose application forms reach the college on or before the first Friday in December by 5pm.

## SUPPORTING AND INFORMING YOUR APPLICATION

To help you decide if a sixth form college is the right environment for you, and that BHASVIC in particular is the right place for you to study, it is a good idea to do some homework before you write your application. Our website [www.bhasvic.ac.uk](http://www.bhasvic.ac.uk) has plenty of information to help you research the courses and options that are right for you. We often visit school careers fairs and information evenings to present to you and your parents and to answer any questions you might have. Our Open Evenings in November are also a great opportunity for you to come and see us, visit departments and ask any questions.

You can also join one of our small group tours from December to June. Visit our website for more information at [www.bhasvic.ac.uk](http://www.bhasvic.ac.uk).

**For any matters concerning applications, please contact Denise Mansfield (Admissions Manager) at the College; [admissions@bhasvic.ac.uk](mailto:admissions@bhasvic.ac.uk) or telephone 01273 859810.**

# Summary of the Application Process

## SEPTEMBER 2018 START PLANNING

Start planning early! This time next year you could be a BHASVIC student, so think ahead. Make the most of information in this prospectus and on our website, along with information sessions at your school. Start to get an idea of what courses you think you might want to do, what the entry requirements are and what qualifications you need to have to get into future degree courses or careers you might have in mind.



## DECEMBER 2018 APPLICATION DEADLINE

Make sure your application is submitted by the first Friday in December by 5pm, to be considered a priority applicant.



## NOVEMBER 2018 OPEN EVENINGS

There are two Open Evenings in November for prospective students and parents to visit the college. These give you a fantastic opportunity to see the college and facilities, to hear from the Principal about the college's ethos and culture and to visit departments and find out more about the courses you are interested in. You will also get a chance to speak to lots of current students who will be the best source of information on what college is really like!

## NOVEMBER 2018 – EASTER 2019 INTERVIEWS AND OFFER LETTER

If you are a UK student and we have received your application form by the first Friday in December by 5pm, you will normally be given an admissions interview at the college. We consider your current progress by looking at your most recent school report and attendance, and discuss your intended programme of study, entry conditions and future career. If we are able to make you an offer, we will normally do so within two weeks of your interview (although students who are interviewed before Christmas will not receive an offer until January). You must accept your offer of a place at BHASVIC within two weeks of receiving an offer letter.



## **JULY 2019**

### **MOVING ON DAY FOR STUDENTS NEW PARENTS INDUCTION EVENINGS**

Once you have accepted your place at the college, you will be invited to our Moving On day in late June or early July (as soon as GCSE exams have finished) when you come to have induction lessons and confirm your course choices. We also run Parents' Induction evenings where parents can find out more about our guidance and support systems.



## **AUGUST - SEPTEMBER 2019**

### **RESULTS AND ENROLMENT**

When you receive your GCSE results in August, we can offer you advice via our Results Advisory Service. At the very end of August or beginning of September you will have an enrolment interview to finalise your course ready for you to become an official BHASVIC student.



## **SEPTEMBER 2019**

### **INDUCTION**

Around the second week in September our full teaching timetable will start and you will begin your time as a student with an induction session which will ensure you know everything you need to know to make the best start here at BHASVIC.



# Course List

Course	Qualification	Page Number
Art (Fine Art)	A	38
Biology	A	40
Business (Various)	A / BTEC	42
Chemistry	A	46
Classical Civilisation	A	48
Computing (Various)	A / BTEC	50
Creative Digital Media Production	BTEC	54
Criminology	WJEC	58
Dance	A	60
Drama and Theatre Studies	A	62
Economics	A	64
English (Various)	A / GCSE	66
Environmental Science	A	74
Film Studies	A	76
French	A	78
Geography	A	80
German	A	82
Graphic Design and Communication	A	84
Health and Social Care	BTEC	86
History	A	88
IT	BTEC	90
Law (Various)	A / BTEC	92
Maths (Various)	A / GCSE	96
Media Studies	A	102
Music (Various)	A / BTEC / Grades 5-8	104
Performing Arts	BTEC	110
Philosophy	A	112
Photography	A	114
Physics	A	116
Politics	A	118
Psychology	A	120
Sociology	A	122
Spanish	A	124
Physical Education	A	126
Sport (Various)	BTEC	128
Textile Design	A	134


## CONTACT INFORMATION


General Enquiries:  
Telephone: 01273 552200  
Fax: 01273 563139  
Website: [www.bhasvic.ac.uk](http://www.bhasvic.ac.uk)

Admission Enquiries:  
Admissions/Schools Liaison Manager: Denise Mansfield  
Admissions Direct line: 01273 859810  
Admissions Email: [admissions@bhasvic.ac.uk](mailto:admissions@bhasvic.ac.uk)

## HOW TO FIND US

Brighton Hove & Sussex  
Sixth Form College  
205 Dyke Road  
Hove BN3 6EG

 /Bhasvic.ac.uk

 @BHASVIC

All contents copyright 2018 BHASVIC.

All contents correct at time of going to press. The college reserves the right to amend any aspect of its course provision without prior notice.

